

Anti-Protein KIBRA WWC1 Antibody

Catalog Number: A02837

About WWC1

The WW and C2 domain containing 1 (WWC1) protein, also known as KIBRA, possesses two WW domains and an internal C2-like domain (1). WWC1 was originally identified as a memory performance-associated protein in humans (2) and has recently been shown to be a novel regulator of the Hippo pathway (3). WWC1 is phosphorylated by the mitotic kinases Aurora-A and -B (4), and in turn activates the Aurora kinases and is required for precise chromosome alignment during mitosis (5).

Overview

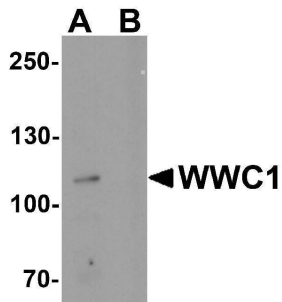
Product Name	Anti-Protein KIBRA WWC1 Antibody
Reactive Species	Human, Mouse, Rat
Description	Boster Bio Anti-Protein KIBRA WWC1 Antibody (Catalog # A02837). Tested in ELISA, WB, IHC-P, IF applications. This antibody reacts with Human, Mouse, Rat.
Application	ELISA, IF, IHC-P, WB
Clonality	Polyclonal
Formulation	WWC1 antibody is supplied in PBS containing 0.02% sodium azide.
Storage Instructions	WWC1 antibody can be stored at 4°C for three months and -20°C, stable for up to one year.
Host	Rabbit
Uniprot ID	Q8IX03

Technical Details

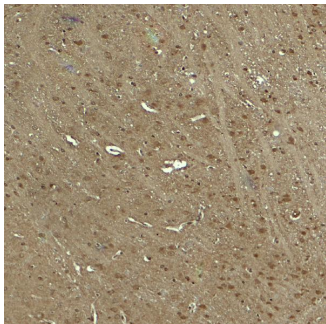
Immunogen	WWC1 antibody was raised against an 18 amino acid peptide near the amino terminus of human WWC1. The immunogen is located within amino acids 60 - 110 of WWC1.
Predicted Reactive Species	Mouse, Rat
Cross Reactivity	WWC1 antibody is human, mouse and rat reactive. At least three isoforms of WWC1 are known to exist; this antibody will detect all three isoforms.
Isotype	IgG
Form	Liquid
Concentration	1 mg/mL
Purification	WWC1 antibody is affinity chromatography purified via peptide column.
Suggested Dilutions	WWC1 antibody can be used for detection of WWC1 by Western blot at 1 - 2 ug/ml. Antibody can

also be used for immunohistochemistry starting at 5 ug/mL. For immunofluorescence start at 20 ug/mL.
Antibody validated: Western Blot in human samples; Immunohistochemistry in mouse samples and Immunofluorescence in mouse samples. All other applications and species not yet tested. Optimal dilutions for each application should be determined by the researcher.

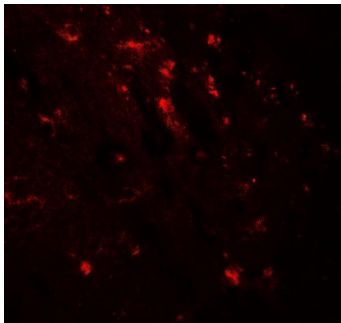
Anti-Protein KIBRA WWC1 Antibody (A02837) Images



Western blot analysis of WWC1 in human brain tissue lysate with WWC1 antibody at 1 ug/ml in (A) the absence and (B) the presence of blocking peptide.



Immunohistochemistry of WWC1 in mouse brain tissue with WWC1 antibody at 5 ug/ml.



Immunofluorescence of WWC1 in mouse brain tissue with WWC1 antibody at 20 ug/ml.

Submit a product review to [Biocompare.com](https://www.biocompare.com)

Submit a review of this product to [Biocompare.com](https://www.biocompare.com) to receive a \$20 Amazon.com giftcard! Your reviews help your fellow scientists make the right decisions. Thank you for your contribution.



Anti-Protein KIBRA WWC1 Antibody

For Research Use Only. Not for use in diagnostic procedures.