

Anti-TAB1 Antibody

Catalog Number: A02847

About TAB1

TAB1 was identified as a regulator of the MAP kinase kinase kinase TAK1/MAP3K7, which is known to mediate various intracellular signaling pathways, such as those induced by TGF-beta and members of the Toll-IL-1R (TIR) superfamily, thus acting as an intermediate in both proliferative and innate and adaptive immune responses. This protein, together with either TAB2 or TAB3, activates TAK1 kinase in response to upstream signals. It has been shown that the C-terminal portion of TAB1 is sufficient for binding and activation of TAK1, while a portion of the N-terminus acts as a dominant-negative inhibitor of TGF-beta, demonstrating how this protein can function as a mediator between TGF-beta receptors and TAK1.

Overview

Product Name	Anti-TAB1 Antibody
Reactive Species	Human, Mouse
Description	Boster Bio Anti-TAB1 Antibody (Catalog # A02847). Tested in ELISA, WB, ICC, IF applications. This antibody reacts with Human, Mouse.
Application	ELISA, IF, ICC, WB
Clonality	Polyclonal
Formulation	TAB1 Antibody is supplied in PBS containing 0.02% sodium azide.
Storage Instructions	TAB1 antibody can be stored at 4°C for three months and -20°C, stable for up to one year. Avoid repeated freeze-thaw cycles. Antibodies should not be exposed to prolonged high temperatures.
Host	Rabbit
Uniprot ID	Q15750

Technical Details

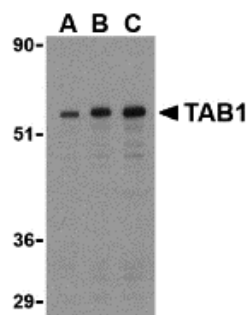
Immunogen	TAB1 antibody was raised against a synthetic peptide corresponding to 13 amino acids in the center of human TAB1. The immunogen is located within amino acids 220 - 270 of TAB1.
Predicted Reactive Species	Mouse, Rat
Isotype	IgG
Form	Liquid
Concentration	1 mg/mL
Purification	TAB1 Antibody is affinity chromatography purified via peptide column.

Suggested Dilutions

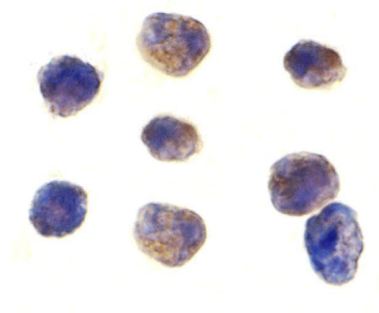
TAB1 antibody can be used for the detection of TAB1 by Western blot at 0.5 to 2 ug/mL. Antibody can also be used for immunocytochemistry starting at 1 ug/mL. For immunofluorescence start at 2 ug/mL.

Antibody validated: Western Blot in mouse samples; Immunocytochemistry in human samples and Immunofluorescence in mouse samples. All other applications and species not yet tested. Optimal dilutions for each application should be determined by the researcher.

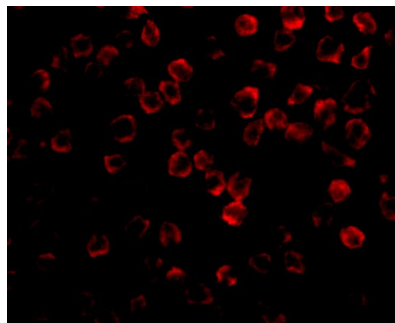
Anti-TAB1 Antibody (A02847) Images



Western blot analysis of TAB1 in 3T3 cell lysate with TAB1 antibody at (A) 0.5, (B) 1, and (C) 2 ug/mL.



Immunocytochemistry of TAB1 in K562 cells with TAB1 antibody at 1 ug/mL.



Immunofluorescence of TAB1 in 3T3 cells with TAB1 antibody at 2 ug/mL.

Submit a product review to [Biocompare.com](https://www.biocompare.com)

Submit a review of this product to [Biocompare.com](https://www.biocompare.com) to receive a \$20 Amazon.com giftcard! Your reviews help your fellow scientists make the right decisions. Thank you for your contribution.



Anti-TAB1 Antibody

For Research Use Only. Not for use in diagnostic procedures.