

Anti-JMJD2A KDM4A Antibody

Catalog Number: A02850

About KDM4A

Members of the Jumonji domain 2 (JMJD2) family contain a JmjN domain, a JmjC domain, a JD2H domain, two TUDOR domains, and two PHD-type zinc fingers. The first member of this group, JMJD2A, is widely expressed in human tissues and cell lines and functions as a trimethylation-specific demethylase, converting specific trimethylated histone residues to the dimethylated form, and as a transcriptional repressor. JMJD2A can also form a complex with the androgen receptor (AR), a transcription factor that is pivotal for the development of prostate cancer. Overexpression of JMJD2A stimulates AR function and this stimulation is dependent on JMJD2A catalytic activity, suggesting that JMJD2A might be a critical protein with roles in cell proliferation and oncogenesis.

Overview

Product Name	Anti-JMJD2A KDM4A Antibody
Reactive Species	Human, Mouse, Rat
Description	Boster Bio Anti-JMJD2A KDM4A Antibody (Catalog # A02850). Tested in ELISA, WB, IHC-P applications. This antibody reacts with Human, Mouse, Rat.
Application	ELISA, IHC-P, WB
Clonality	Polyclonal
Formulation	JMJD2A Antibody is supplied in PBS containing 0.02% sodium azide.
Storage Instructions	JMJD2A antibody can be stored at 4°C for three months and -20°C, stable for up to one year. Avoid repeated freeze-thaw cycles. Antibodies should not be exposed to prolonged high temperatures.
Host	Rabbit
Uniprot ID	O75164

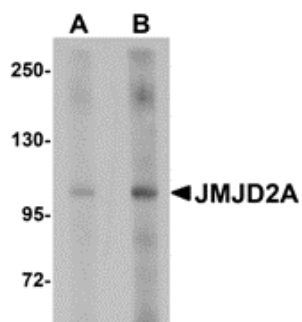
Technical Details

Immunogen	JMJD2A antibody was raised against a 14 amino acid synthetic peptide from near the center of human JMJD2A. The immunogen is located within amino acids 340 - 390 of JMJD2A.
Predicted Reactive Species	Mouse, Rat
Isotype	IgG
Form	Liquid
Concentration	1 mg/mL
Purification	JMJD2A Antibody is affinity chromatography purified via peptide column.

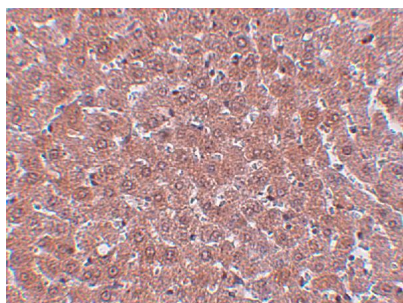
Suggested Dilutions

JMJD2A antibody can be used for detection of JMJD2A by Western blot at 1 - 2 ug/mL. Antibody can also be used for immunohistochemistry starting at 5 ug/mL.
Antibody validated: Western Blot in rat samples and Immunohistochemistry in rat samples. All other applications and species not yet tested. Optimal dilutions for each application should be determined by the researcher.

Anti-JMJD2A KDM4A Antibody (A02850) Images



Western blot analysis of JMJD2A in rat liver tissue lysate with JMJD2A antibody at (A) 1 and (B) 2 ug/mL.



Immunohistochemistry of JMJD2A in rat liver tissue with JMJD2A antibody at 5 ug/mL.

Submit a product review to Biocompare.com

Submit a review of this product to Biocompare.com to receive a \$20 Amazon.com giftcard! Your reviews help your fellow scientists make the right decisions. Thank you for your contribution.



Anti-JMJD2A KDM4A Antibody

For Research Use Only. Not for use in diagnostic procedures.