

Anti-R-spondin-1 RSPO1 Antibody

Catalog Number: A02857-1

About RSPO1

RSPO1 is a member of a family of secreted growth factors that can operate through the canonical Wnt signaling pathway by stabilizing the intracellular beta-catenin, thereby regulating functions mediated by beta-catenin such as cell fate decisions and embryonic patterning. RSPO1 was recently identified through linkage analysis to be involved in sex determination and mammalian ovarian development. RSPO1 is thought to regulate cellular responsiveness to Wnt ligands by modulating the cell-surface expression of the Wnt co-receptor LRP6 by interfering with the DKK/Kremen-mediated internalization of LRP6 through an interaction with Kremen, resulting in increased LRP6 cell-surface levels.

Overview

Product Name	Anti-R-spondin-1 RSPO1 Antibody
Reactive Species	Human, Mouse
Description	Boster Bio Anti-R-spondin-1 RSPO1 Antibody (Catalog # A02857-1). Tested in ELISA, WB, IHC-P, IF applications. This antibody reacts with Human, Mouse.
Application	ELISA, IF, IHC-P, WB
Clonality	Polyclonal
Formulation	RSPO1 Antibody is supplied in PBS containing 0.02% sodium azide.
Storage Instructions	RSPO1 antibody can be stored at 4°C up to one year. Antibodies should not be exposed to prolonged high temperatures.
Host	Rabbit
Uniprot ID	Q2MKA7

Technical Details

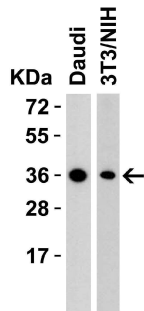
Immunogen	Anti-RSPO1 antibody was raised against a peptide corresponding to 16 amino acids near the amino terminus of human RSPO1. The immunogen is located within the first 50 amino acids of RSPO1.
Predicted Reactive Species	Rat
Cross Reactivity	At least three isoforms of RSPO1 are known to exist; this antibody will detect the largest and smallest isoforms. RSPO1 antibody will not cross-react with other RSPO family members.
Isotype	IgG
Form	Liquid
Concentration	1 mg/mL
Purification	RSPO1 Antibody is affinity chromatography purified via peptide column.

Suggested Dilutions

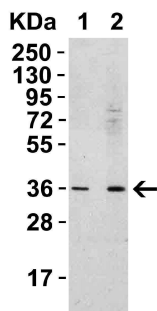
WB: 0.5-2 ug/mL; IHC: 2.5-5 ug/mL; IF: 5 ug/mL.

Antibody validated: Western Blot in human and mouse samples; Immunohistochemistry in human samples; Immunofluorescence in human samples. All other applications and species not yet tested. Optimal dilutions for each application should be determined by the researcher.

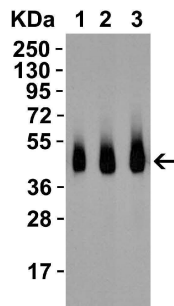
Anti-R-spondin-1 RSPO1 Antibody (A02857-1) Images



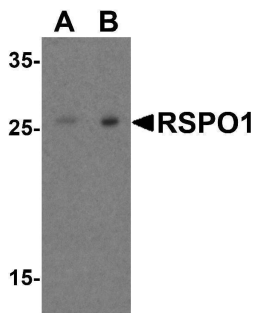
Western Blot Validation in Human and Mouse Cell Lines
Loading: 15 ug of lysates per lane. Antibodies: RSPO1, A02857-1 (2 ug/mL), 1h incubation at RT in 5% NFDm/TBST. Secondary: Goat anti-rabbit IgG HRP conjugate at 1:10000 dilution.



Western Blot Validation in Human Spleen Loading: 15 ug of lysates per lane. Antibodies: RSPO1, A02857-1 (Lane 1: 0.5 ug/mL, Lane 2: 1 ug/mL), 1h incubation at RT in 5% NFDm/TBST. Secondary: Goat anti-rabbit IgG HRP conjugate at 1:10000 dilution.

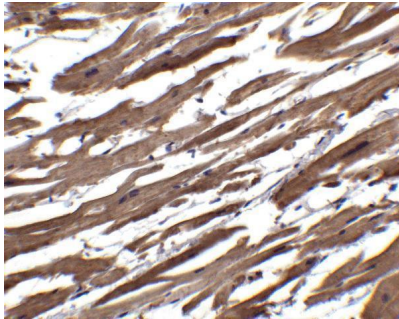
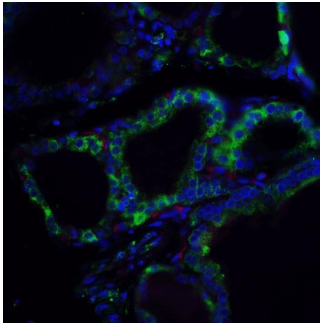


Western Blot Validation with Recombinant Protein Loading: 30 ng of human RSPO1 recombinant protein per lane. Antibodies: RSPO1, A02857-1 (Lane 1: 0.5 ug/mL, Lane 2: 1 ug/mL, Lane 3: 2 ug/mL), 1h incubation at RT in 5% NFDm/TBST. Secondary: Goat anti-rabbit IgG HRP conjugate at 1:10000 dilution.

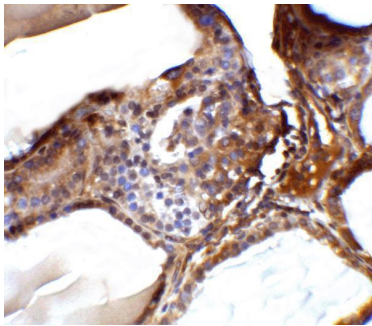


Western Blot Validation in Human Heart Loading: 15 ug of lysates per lane. Antibodies: RSPO1, A02857-1 (A: 1 ug/mL, B: 2 ug/mL), 1h incubation at RT in 5% NFDm/TBST. Secondary: Goat anti-rabbit IgG HRP conjugate at 1:10000 dilution.

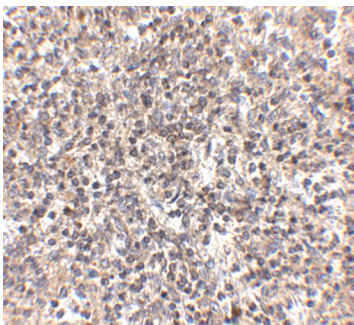
Immunofluorescence Validation of RSPO1 in Human Spleen
Immunofluorescent analysis of 4% paraformaldehyde-fixed human spleen labeling RSPO1 with A02857-1 at 5 ug/mL, followed by goat anti-rabbit IgG secondary antibody at 1/500 dilution (green) with Phalloidin staining (red) and DAPI staining (blue).



Immunohistochemistry Validation of RSPO1 in Human Heart
Immunohistochemical analysis of paraffin-embedded mouse spleen tissue using anti-RSPO1 antibody (A02857-1) at 2.5 ug/ml. Tissue was fixed with formaldehyde and blocked with 10% serum for 1 h at RT; antigen retrieval was by heat mediation with a citrate buffer (pH6). Samples were incubated with primary antibody overnight at 4°C. A goat anti-rabbit IgG H&L (HRP) at 1/250 was used as secondary. Counter stained with Hematoxylin.



Immunohistochemistry Validation of RSPO1 in Human Spleen Tissue
Immunohistochemical analysis of paraffin-embedded human spleen tissue using anti-RSPO1 antibody (A02857-1) at 5 ug/ml. Tissue was fixed with formaldehyde and blocked with 10% serum for 1 h at RT; antigen retrieval was by heat mediation with a citrate buffer (pH6). Samples were incubated with primary antibody overnight at 4°C. A goat anti-rabbit IgG H&L (HRP) at 1/250 was used as secondary. Counter stained with Hematoxylin.



Immunohistochemistry Validation of RSPO1 in Human Spleen Tissue
Immunohistochemical analysis of paraffin-embedded human spleen tissue using anti-RSPO1 antibody (A02857-1) at 2.5 ug/ml. Tissue was fixed with formaldehyde and blocked with 10% serum for 1 h at RT; antigen retrieval was by heat mediation with a citrate buffer (pH6). Samples were incubated with primary antibody overnight at 4°C. A goat anti-rabbit IgG H&L (HRP) at 1/250 was used as secondary. Counter stained with Hematoxylin.

Submit a product review to [Biocompare.com](https://www.biocompare.com)

Submit a review of this product to [Biocompare.com](https://www.biocompare.com) to receive a \$20 Amazon.com giftcard! Your reviews help your fellow scientists make the right decisions. Thank you for your contribution.



Anti-R-spondin-1 RSPO1 Antibody

For Research Use Only. Not for use in diagnostic procedures.