

Anti-CRMP-2 DPYSL2 Antibody

Catalog Number: A02860-1

About DPYSL2

Glutamate receptors are the predominant excitatory neurotransmitter receptors in the mammalian brain and are activated in a variety of normal neurophysiologic processes. These receptors are heteromeric protein complexes with multiple subunits, each possessing transmembrane regions, and all arranged to form a ligand-gated ion channel. The classification of glutamate receptors is based on their activation by different pharmacologic agonists. This gene belongs to a family of α -amino-3-hydroxy-5-methyl-4-isoxazole propionate (AMPA) receptors. Alternatively spliced transcript variants encoding different isoforms have been found for this gene.

Emamian ES, et al. (2004) J Neurosci. 24(7): 1561-4
Palmer, C.L. et al. (2005) Pharmacol. Rev. 57, 253-277.

Overview

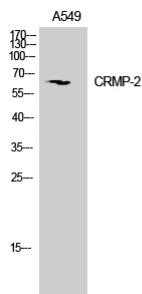
Product Name	Anti-CRMP-2 DPYSL2 Antibody
Reactive Species	Human, Mouse, Rat
Description	Boster Bio Anti-CRMP-2 DPYSL2 Antibody catalog # A02860-1. Tested in WB applications. This antibody reacts with Human, Mouse, Rat.
Conjugate	Unconjugated
Application	WB
Clonality	Polyclonal 7A6
Formulation	Liquid in PBS containing 50% glycerol, 0.5% BSA and 0.02% sodium azide.
Storage Instructions	Store at -20°C for one year. For short term storage and frequent use, store at 4°C for up to one month. Avoid repeated freeze-thaw cycles.
Host	Rabbit
Uniprot ID	Q16555

Technical Details

Immunogen	Synthesized peptide derived from human CRMP-2 around the non-phosphorylation site of T514.
Predicted Reactive Species	Bovine, Canine, Equine, Guinea Pig, Pig, Rabbit, Yeast
Isotype	IgG
Form	Liquid
Concentration	This antibody's concentration is >0.5mg/ml.

Purification	Immunogen affinity purified
Suggested Dilutions	<p>Dilute the sample so that the expected range of concentrations fall within the detection range of this kit.</p> <p>If the expected range of concentration is unknown, a pilot test should be conducted to decide the optimal dilution ratio for your samples.</p> <p>Some PubMed article(s) citing the expression level of this target are as follows:</p> <p>Boster Bio's internal QC testing used:</p> <p>WB, 1:500-1:2000</p>

Anti-CRMP-2 DPYSL2 Antibody (A02860-1) Images



Western Blot (WB) analysis of A549 cells using CRMP-2 Polyclonal antibody.

Submit a product review to Biocompare.com

Submit a review of this product to Biocompare.com to receive a \$20 Amazon.com giftcard! Your reviews help your fellow scientists make the right decisions. Thank you for your contribution.



Anti-CRMP-2 DPYSL2 Antibody