

## Anti-Proteasome subunit beta type-9 PSMB9 Antibody

Catalog Number: A02867-1

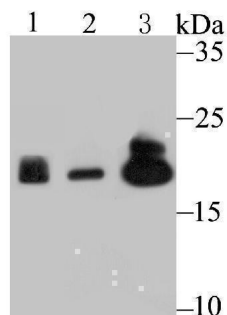
### Overview

Product Name	Anti-Proteasome subunit beta type-9 PSMB9 Antibody
Reactive Species	Human, Mouse
Description	Boster Bio Anti-Proteasome subunit beta type-9 PSMB9 Antibody catalog # A02867-1. Tested in WB,IHC,Flow Cytometry,IP applications. This antibody reacts with Human,Mouse.
Application	Flow Cytometry, IP, IHC, WB
Clonality	Polyclonal
Formulation	Rabbit IgG, 1mg/ml in PBS with 0.02% sodium azide, 50% glycerol, pH7.2
Storage Instructions	Store at -20°C for one year. For short term storage and frequent use, store at 4°C for up to one month. Avoid repeated freeze-thaw cycles.
Host	Rabbit
Uniprot ID	P28065

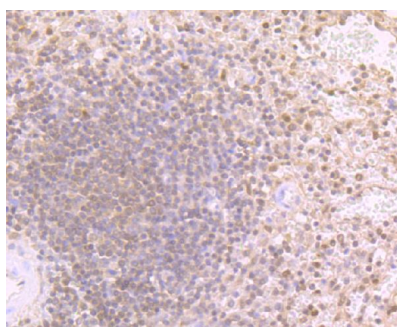
### Technical Details

Immunogen	Recombinant protein
Isotype	IgG
Form	Liquid
Concentration	1 mg/ml
Purification	ProA affinity purified
Suggested Dilutions	WB: 1:500-1:1,000 IHC: 1:50-1:200 FC: 1:50-1:100

## Anti-Proteasome subunit beta type-9 PSMB9 Antibody (A02867-1) Images



Western blot analysis of Proteasome 20S LMP2 on different lysates using anti-Proteasome 20S LMP2 antibody at 1/500 dilution. Positive control: Lane 1: Mouse spleen tissue Lane 2: U937 Lane 3: Mouse colon tissue



Immunohistochemical analysis of paraffin-embedded human spleen tissue using anti-Proteasome 20S LMP2 antibody. Counter stained with hematoxylin.

### Submit a product review to [Biocompare.com](https://www.biocompare.com)

Submit a review of this product to [Biocompare.com](https://www.biocompare.com) to receive a \$20 Amazon.com giftcard! Your reviews help your fellow scientists make the right decisions. Thank you for your contribution.



Anti-Proteasome subunit beta type-9 PSMB9 Antibody

For Research Use Only. Not for use in diagnostic procedures.