

Anti-CES2 Antibody (Center)

Catalog Number: A02868-1

About CES2

CES2 is a member of the carboxylesterase large family. The family members are responsible for the hydrolysis or transesterification of various xenobiotics, such as cocaine and heroin, and endogenous substrates with ester, thioester, or amide bonds. They may participate in fatty acyl and cholesterol ester metabolism, and may play a role in the blood-brain barrier system. The protein encoded by this gene is the major intestinal enzyme and functions in intestine drug clearance.

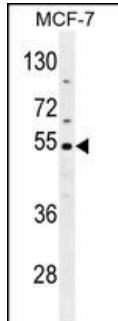
Overview

Product Name	Anti-CES2 Antibody (Center)
Reactive Species	Human
Description	Boster Bio Anti-CES2 Antibody (Center) (Catalog # A02868-1). Tested in WB, IHC-P, Flow Cytometry application(s). This antibody reacts with Human.
Application	Flow Cytometry, IHC-P, WB
Clonality	Polyclonal
Formulation	Purified polyclonal antibody supplied in PBS with 0.09% (W/V) sodium azide.
Storage Instructions	Maintain refrigerated at 2-8°C for up to 2 weeks. For long-term storage, store at -20°C in small aliquots to prevent freeze-thaw cycles.
Host	Rabbit
Uniprot ID	O00748

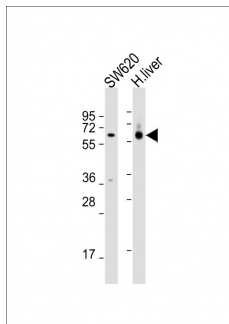
Technical Details

Immunogen	This CES2 antibody is generated from rabbits immunized with a KLH conjugated synthetic peptide between 340-369 amino acids from the Central region of human CES2.
Predicted Reactive Species	Rat
Isotype	Rabbit IgG
Purification	This antibody is purified through a protein A column, followed by peptide affinity purification.
Suggested Dilutions	WB: 1:2000 IHC-P: 1:50-1:100 FC: 1:25

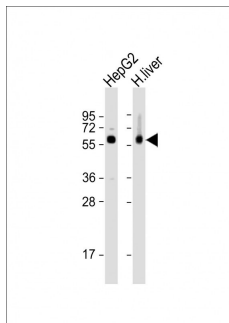
Anti-CES2 Antibody (Center) (A02868-1) Images



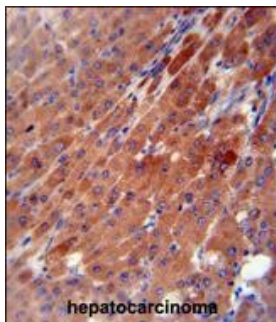
CES2 Antibody (Center) western blot analysis in MCF-7 cell line lysates (35ug/lane). This demonstrates the CES2 antibody detected the CES2 protein (arrow).



All lanes : Anti-CES2 Antibody (Center) at 1:2000 dilution
Lane 1: SW620 whole cell lysates
Lane 2: human liver lysates
Lysates/proteins at 20 µg per lane. Secondary Goat Anti-Rabbit IgG, (H+L), Peroxidase conjugated at 1/10000 dilution. Predicted band size : 62 kDa
Blocking/Dilution buffer: 5% NFDN/TBST.

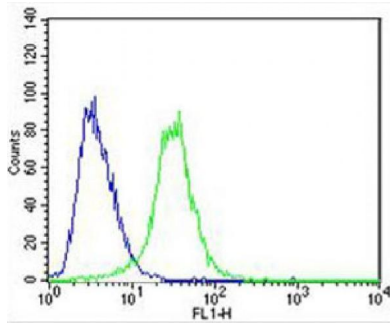


All lanes : Anti-CES2 Antibody (Center) at 1:2000 dilution
Lane 1: HepG2 whole cell lysates
Lane 2: human liver lysates
Lysates/proteins at 20 µg per lane. Secondary Goat Anti-Rabbit IgG, (H+L), Peroxidase conjugated at 1/10000 dilution. Predicted band size : 62 kDa
Blocking/Dilution buffer: 5% NFDN/TBST.

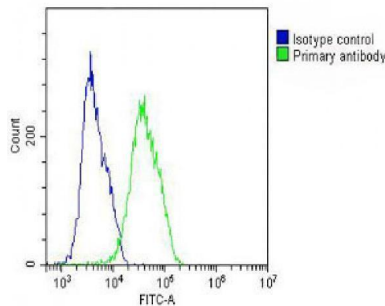


CES2 antibody (Center) (Cat. #A02868-1) immunohistochemistry analysis in formalin fixed and paraffin embedded human hepatocarcinoma followed by peroxidase conjugation of the secondary antibody and DAB staining. This data demonstrates the use of the CES2 antibody (Center) for immunohistochemistry. Clinical relevance has not been evaluated.

Overlay histogram showing U-87 MG cells stained with A02868-1 (green line). The cells were fixed with 2% paraformaldehyde (10 min) and then permeabilized with 90% methanol for 10 min. The cells were then incubated in 2% bovine serum albumin to block non-specific protein-protein interactions followed by the antibody (A02868-1, 1:25 dilution) for 60 min at 37°C. The secondary antibody



used was Alexa Fluor® 488 goat anti-rabbit IgG (H+L) at 1/400 dilution for 40 min at 37°C. Isotype control antibody (blue line) was rabbit IgG1 (1ug/1x10⁶ cells) used under the same conditions. Acquisition of >10, 000 events was performed.



Overlay histogram showing MCF-7 cells stained with A02868-1 (green line). The cells were fixed with 2% paraformaldehyde (10 min) and then permeabilized with 90% methanol for 10 min. The cells were then incubated in 2% bovine serum albumin to block non-specific protein-protein interactions followed by the antibody (A02868-1, 1:25 dilution) for 60 min at 37°C. The secondary antibody used was Goat-Anti-Rabbit IgG, DyLight® 488 Conjugated Highly Cross-Adsorbed at 1/200 dilution for 40 min at 37°C. Isotype control antibody (blue line) was rabbit IgG (1ug/1x10⁶ cells) used under the same conditions. Acquisition of >10, 000 events was performed.

Submit a product review to Biocompare.com

Submit a review of this product to Biocompare.com to receive a \$20 Amazon.com giftcard! Your reviews help your fellow scientists make the right decisions. Thank you for your contribution.



Anti-CES2 Antibody (Center)

For Research Use Only. Not for use in diagnostic procedures.