

## Anti-Ephrin type-A receptor 3 EphA3 Antibody

Catalog Number: A02872

### About EPHA3

Probable transcriptional regulator involved in developmental processes. Is required for normal development of the pharyngeal arch arteries By similarity.

Chieffo C., Genomics 43:267-277(1997).

Yagi H., Lancet 362:1366-1373(2003).

Sjoeblom T., Science 314:268-274(2006).

### Overview

Product Name	Anti-Ephrin type-A receptor 3 EphA3 Antibody
Reactive Species	Human, Mouse, Rat
Description	Boster Bio Anti-Ephrin type-A receptor 3 EphA3 Antibody catalog # A02872. Tested in WB applications. This antibody reacts with Human,Mouse,Rat.
Application	WB
Clonality	Polyclonal
Formulation	Rabbit IgG, 1mg/ml in PBS with 0.02% sodium azide, 50% glycerol, pH7.2
Storage Instructions	Store at -20°C for one year. For short term storage and frequent use, store at 4°C for up to one month. Avoid repeated freeze-thaw cycles.
Host	Rabbit
Uniprot ID	P29320

### Technical Details

Immunogen	Synthesized peptide derived from C-terminal of human TBX1.
Predicted Reactive Species	Boar, Bovine, Canine, Golden Hamster
Form	Liquid
Concentration	1 mg/ml
Purification	The antibody was affinity-purified from rabbit antiserum by affinity-chromatography using epitope-specific immunogen and the purity is > 95% (by SDS-PAGE).
Suggested Dilutions	Dilute the sample so that the expected range of concentrations fall within the detection range of this kit.

If the expected range of concentration is unknown, a pilot test should be conducted to decide the optimal dilution ratio for your samples.

Some PubMed article(s) citing the expression level of this target are as follows:

Boster Bio's internal QC testing used:

WB: 1:500-1:1000

## Anti-Ephrin type-A receptor 3 EphA3 Antibody (A02872) Images

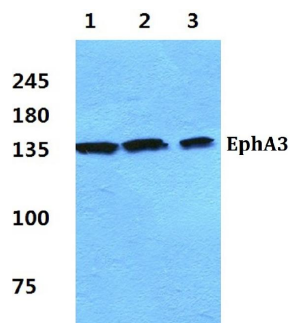


Figure 1. Western blotting validation for Anti-Ephrin type-A receptor 3 EphA3 Antibody A02872

Western blot (WB) analysis of EphA3 polyclonal antibody at 1:500 dilution

Lane1:Hela cell lysate

Lane2:NIH-3T3 cell lysate

Lane3:PC12 cell lysate

Electrophoresis was performed on a SDS-PAGE gel. To determine SDS-PAGE gel concentration

### Submit a product review to Biocompare.com

Submit a review of this product to Biocompare.com to receive a \$20 Amazon.com giftcard! Your reviews help your fellow scientists make the right decisions. Thank you for your contribution.



Anti-Ephrin type-A receptor 3 EphA3 Antibody