

## Anti-Autophagy-related protein 13 ATG13 Antibody

Catalog Number: A02874

### About ATG13

Autophagy, the process of bulk degradation of cellular proteins through an autophagosomic-lysosomal pathway is important for normal growth control and may be defective in tumor cells. It is involved in the preservation of cellular nutrients under starvation conditions as well as the normal turnover of cytosolic components. This process is negatively regulated by TOR (Target of rapamycin) through phosphorylation of autophagy protein ATG1. ATG13 forms a complex with ULK1 and ULK2, the mammalian homologs of ATG1, and with FIP200. This complex is a target of TOR phosphorylation under normal conditions; inhibition of TOR by rapamycin or leucine deprivation leads to dephosphorylation of ATG13, ULK1 and ULK2, which then leads to autophagy. Knockdown of ATG13 inhibits autophagosome formation.

### Overview

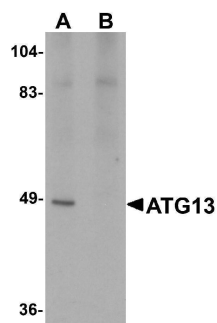
Product Name	Anti-Autophagy-related protein 13 ATG13 Antibody
Reactive Species	Human, Mouse, Rat
Description	Boster Bio Anti-Autophagy-related protein 13 ATG13 Antibody (Catalog # A02874). Tested in ELISA, WB, IHC-P, IF applications. This antibody reacts with Human, Mouse, Rat.
Application	ELISA, IF, IHC-P, WB
Clonality	Polyclonal
Formulation	ATG13 Antibody is supplied in PBS containing 0.02% sodium azide.
Storage Instructions	ATG13 antibody can be stored at 4°C for three months and -20°C, stable for up to one year. Avoid repeated freeze-thaw cycles. Antibodies should not be exposed to prolonged high temperatures.
Host	Rabbit
Uniprot ID	O75143

### Technical Details

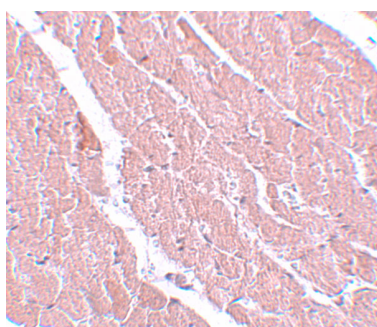
Immunogen	ATG13 antibody was raised against a 15 amino acid synthetic peptide near the carboxy terminus of human ATG13. The immunogen is located within amino acids 450 - 500 of ATG13.
Predicted Reactive Species	Bovine
Cross Reactivity	Multiple isoforms of ATG13 are known to exist.
Isotype	IgG
Form	Liquid
Concentration	1 mg/mL

Purification	ATG13 Antibody is affinity chromatography purified via peptide column.
Suggested Dilutions	ATG13 antibody can be used for detection of ATG13 by Western blot at 1 ug/mL. Antibody can also be used for immunohistochemistry starting at 5 ug/mL. For immunofluorescence start at 20 ug/mL. Antibody validated: Western Blot in rat samples; Immunohistochemistry in mouse samples and Immunofluorescence in mouse samples. All other applications and species not yet tested. Optimal dilutions for each application should be determined by the researcher.

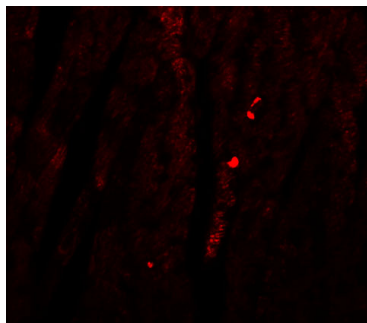
## Anti-Autophagy-related protein 13 ATG13 Antibody (A02874) Images



Western blot analysis of ATG13 in rat heart tissue lysate with ATG13 antibody at 1 ug/mL in (A) the absence and (B) the presence of blocking peptide.



Immunohistochemistry of ATG13 in mouse heart with ATG13 antibody at 5 ug/mL.



Immunofluorescence of ATG13 in Mouse Heart tissue with ATG13 antibody at 20 ug/mL.

### Submit a product review to [Biocompare.com](https://www.biocompare.com)

Submit a review of this product to [Biocompare.com](https://www.biocompare.com) to receive a \$20 Amazon.com giftcard! Your reviews help your fellow scientists make the right decisions. Thank you for your contribution.



Anti-Autophagy-related protein 13 ATG13 Antibody

For Research Use Only. Not for use in diagnostic procedures.