

## Anti-CP Antibody (N-term)

Catalog Number: A02883

### About CP

CP is a metalloprotein that binds most of the copper in plasma and is involved in the peroxidation of Fe(II)transferrin to Fe(III) transferrin. Mutations in this protein cause aceruloplasminemia, which results in iron accumulation and tissue damage, and is associated with diabetes and neurologic abnormalities.

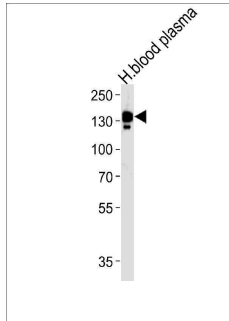
### Overview

Product Name	Anti-CP Antibody (N-term)
Reactive Species	Human, Mouse
Description	Boster Bio Anti-CP Antibody (N-term) (Catalog # A02883). Tested in WB, Flow Cytometry, IHC-P application(s). This antibody reacts with Human, Mouse.
Application	Flow Cytometry, IHC-P, WB
Clonality	Polyclonal
Formulation	Purified polyclonal antibody supplied in PBS with 0.09% (W/V) sodium azide.
Storage Instructions	Maintain refrigerated at 2-8°C for up to 2 weeks. For long-term storage, store at -20°C in small aliquots to prevent freeze-thaw cycles.
Host	Rabbit
Uniprot ID	P00450

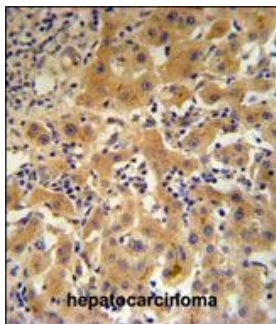
### Technical Details

Immunogen	This CP antibody is generated from rabbits immunized with a KLH conjugated synthetic peptide between 121-151 amino acids from the N-terminal region of human CP.
Predicted Reactive Species	Rat
Isotype	Rabbit IgG
Purification	This antibody is prepared by Saturated Ammonium Sulfate (SAS) precipitation followed by dialysis against PBS.
Suggested Dilutions	WB: 1:1000 IHC-P: 1:50-1:100 FC: 1:10-1:50

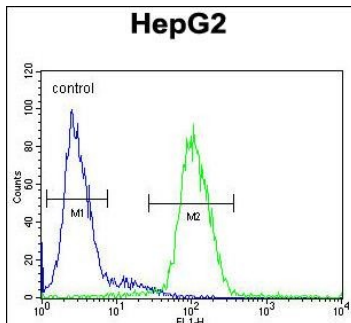
## Anti-CP Antibody (N-term) (A02883) Images



CP Antibody (N-term) western blot analysis in human blood plasma tissue lysates (35ug/lane). This demonstrates the CP antibody detected the CP protein (arrow).



CP Antibody (N-term) IHC analysis in formalin fixed and paraffin embedded human hepatocarcinoma followed by peroxidase conjugation of the secondary antibody and DAB staining. This data demonstrates the use of the CP Antibody (N-term) for immunohistochemistry. Clinical relevance has not been evaluated.



CP Antibody (N-term) flow cytometric analysis of HepG2 cells (right histogram) compared to a negative control cell (left histogram). FITC-conjugated goat-anti-rabbit secondary antibodies were used for the analysis.

### Submit a product review to [Biocompare.com](https://www.biocompare.com)

Submit a review of this product to [Biocompare.com](https://www.biocompare.com) to receive a \$20 Amazon.com giftcard! Your reviews help your fellow scientists make the right decisions. Thank you for your contribution.



Anti-CP Antibody (N-term)

For Research Use Only. Not for use in diagnostic procedures.