

## Anti-Cysteine protease ATG4B ATG4B Antibody

Catalog Number: A02885

### About ATG4B

Autophagy, the process of bulk degradation of cellular proteins through an autophagosomic-lysosomal pathway is important for normal growth control and may be defective in tumor cells. It is involved in the preservation of cellular nutrients under starvation conditions as well as the normal turnover of cytosolic components (1,2). ATG4B, also known as AURL1, is one of four mammalian orthologs of the yeast ATG4 protein; all four are cysteine proteases (3). ATG4 is required for ATG8 conjugation to phosphatidylethanolamine on autophagosomal membranes. In mammals, each ATG4 homolog shows a selective preference for the ATG8 homologs (4). ATG4B has been found to be a novel protective protein in inflammatory colitis (5).

### Overview

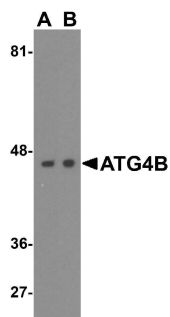
Product Name	Anti-Cysteine protease ATG4B ATG4B Antibody
Reactive Species	Human, Mouse, Rat
Description	Boster Bio Anti-Cysteine protease ATG4B ATG4B Antibody (Catalog # A02885). Tested in ELISA, WB, IHC-P, IF applications. This antibody reacts with Human, Mouse, Rat.
Application	ELISA, IF, IHC-P, WB
Clonality	Polyclonal
Formulation	ATG4B antibody is supplied in PBS containing 0.02% sodium azide.
Storage Instructions	ATG4B antibody can be stored at 4°C for three months and -20°C, stable for up to one year.
Host	Rabbit
Uniprot ID	Q9Y4P1

### Technical Details

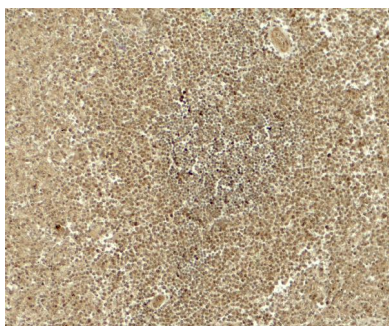
Immunogen	ATG4B antibody was raised against a 17 amino acid peptide near the carboxy terminus of human ATG4B. The immunogen is located within the last 50 amino acids of ATG4B.
Predicted Reactive Species	Bovine, Chicken
Cross Reactivity	ATG4B antibody is human, mouse and rat reactive. At least two isoforms of ATG4B are known to exist; this antibody will detect only the larger isoform. ATG4B is predicted to not cross-react with other ATG4 proteins.
Isotype	IgG
Form	Liquid
Concentration	1 mg/mL

Purification	ATG4B antibody is affinity chromatography purified via peptide column.
Suggested Dilutions	ATG4B antibody can be used for detection of ATG4B by Western blot at 1 - 2 ug/ml. Antibody can also be used for immunohistochemistry starting at 5 ug/mL. For immunofluorescence start at 20 ug/mL. Antibody validated: Western Blot in human samples; Immunohistochemistry in human samples and Immunofluorescence in human samples. All other applications and species not yet tested. Optimal dilutions for each application should be determined by the researcher.

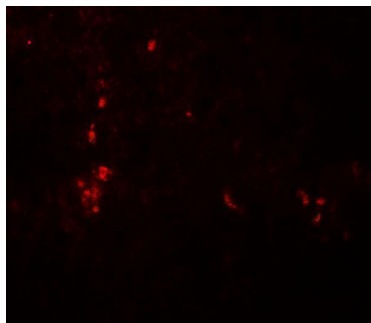
## Anti-Cysteine protease ATG4B ATG4B Antibody (A02885) Images



Western blot analysis of ATG4B in (A) Ramos and (B) Jurkat cell lysate with ATG4B antibody at 1 ug/mL.



Immunohistochemistry of ATG4B in human spleen tissue with ATG4B antibody at 5 ug/ml.



Immunofluorescence of ATG4B in human spleen tissue with ATG4B antibody at 20 ug/ml.

### Submit a product review to [Biocompare.com](https://www.biocompare.com)

Submit a review of this product to [Biocompare.com](https://www.biocompare.com) to receive a \$20 Amazon.com giftcard! Your reviews help your fellow scientists make the right decisions. Thank you for your contribution.



Anti-Cysteine protease ATG4B ATG4B Antibody

For Research Use Only. Not for use in diagnostic procedures.