

## Anti-GFR alpha 1 GFRA1 Antibody

Catalog Number: A02897

### About GFRA1

Glial cell line-derived neurotrophic factor (GDNF) is a potent survival factor for central and peripheral neurons and is essential for the development of kidneys and the enteric nerves system. Physiological responses to GDNF require the presence of a novel glycosylphosphatidylinositol linked protein GDNFRalpha, which is a cell surface receptor for GDNF. The cDNAs encoding GDNFRalpha from human, rat, chicken and mouse have been cloned recently. GDNFRalpha was also termed Ret ligand 1 (RETL1) or TGF-beta-related neurotrophic factor receptor 1 (TrnR1) and nominated as GFRalpha-1 recently. GFRalpha-1 binds GDNF specifically and mediates activation of the Ret protein tyrosine kinase (PTK). Thus, GDNF, GFRalpha and the Ret PTK form a complex to transduce GDNF signal and to mediate GDNF function.

### Overview

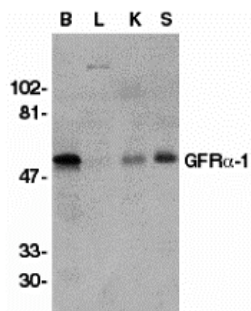
Product Name	Anti-GFR alpha 1 GFRA1 Antibody
Reactive Species	Human, Mouse, Rat
Description	Boster Bio Anti-GFR alpha 1 GFRA1 Antibody (Catalog # A02897). Tested in ELISA, WB, IHC-P, IF applications. This antibody reacts with Human, Mouse, Rat.
Application	ELISA, IF, IHC-P, WB
Clonality	Polyclonal
Formulation	GFR alpha 1 Antibody is supplied in PBS containing 0.02% sodium azide.
Storage Instructions	GFR alpha 1 antibody can be stored at 4°C up to one year. Antibodies should not be exposed to prolonged high temperatures.
Host	Rabbit
Uniprot ID	P56159

### Technical Details

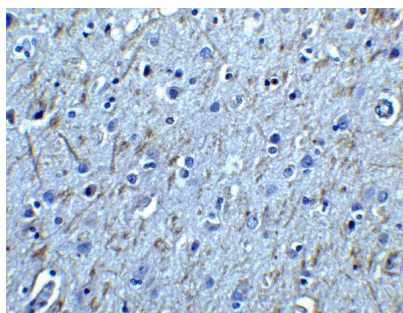
Immunogen	GFR alpha 1 antibody was raised against a 14 amino acid peptide near the center of human GFR alpha 1. The immunogen is located within amino acids 360 - 410 of GFR alpha 1.
Predicted Reactive Species	Bovine, Chicken
Cross Reactivity	GFR alpha 1 antibody is predicted to not cross-react with other members of the GFR alpha family of proteins.
Isotype	IgG
Form	Liquid
Concentration	1 mg/mL

Purification	GFR alpha 1 Antibody is affinity chromatography purified via peptide column.
Suggested Dilutions	GFR alpha 1 antibody can be used for detection of GFR alpha 1 by Western blot at 1 ug/mL. Antibody can also be used for immunohistochemistry starting at 1 ug/mL. Antibody validated: Western Blot in human samples; Immunohistochemistry in human samples and Immunofluorescence in human samples. All other applications and species not yet tested. Optimal dilutions for each application should be determined by the researcher.

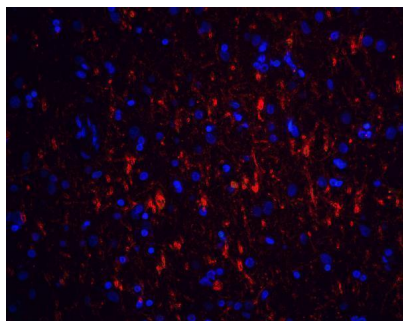
## Anti-GFR alpha 1 GFRA1 Antibody (A02897) Images



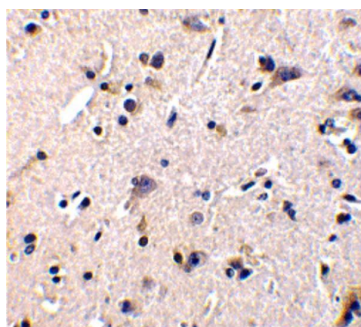
Western blot analysis of GFR alpha 1 in crude membrane fractions of human brain (B), liver (L), kidney (K), and spleen (S), respectively, with GFR alpha 1 antibody at 1 ug/mL.



Immunohistochemistry of GFR alpha 1 in human brain tissue with GFR alpha 1 antibody at 2.5 ug/ml.



Immunofluorescence of GFR alpha 1 in human brain tissue with GFR alpha 1 antibody at 20 ug/mL. Red: GFR alpha 1 Antibody (A02897) Blue: DAPI staining



Immunohistochemistry of GFR alpha 1 in human brain tissue with GFR alpha 1 antibody at 1 ug/mL.

Submit a product review to [Biocompare.com](https://www.biocompare.com)

Submit a review of this product to [Biocompare.com](https://www.biocompare.com) to receive a \$20 Amazon.com giftcard! Your reviews help your fellow scientists make the right decisions. Thank you for your contribution.



Anti-GFR alpha 1 GFRA1 Antibody

For Research Use Only. Not for use in diagnostic procedures.