

## Anti-MSI2 Antibody

Catalog Number: A02898

### About MSI2

Musashi2 (MSI2) is an RNA-binding protein that is highly expressed in precursor cells in the ventricular and subventricular zones of the developing mammalian CNS. Like the related MSI1, MSI2 has been suggested to be involved stem cell production and maintenance. MSI2 is the predominant MSI protein in hematopoietic stem cells, and its knockdown leads to reduced engraftment and depletion in vivo. Expression levels of MSI2 are elevated in myeloid leukemia cells lines, and MSI2 appears to cooperate with BCR-ABL1 to induce an aggressive leukemia; the level of MSI2 directly correlates with decreased survival in patients. MSI2 negatively regulates the asymmetric cell fate determinant NUMB, suggesting that this signaling pathway may provide future targets for future therapies.

### Overview

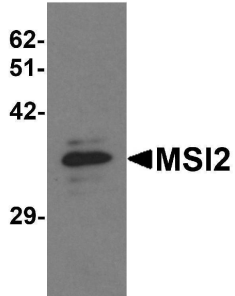
Product Name	Anti-MSI2 Antibody
Reactive Species	Human, Mouse, Rat
Description	Boster Bio Anti-MSI2 Antibody (Catalog # A02898). Tested in ELISA, WB, ICC, IHC-P, IF applications. This antibody reacts with Human, Mouse, Rat.
Application	ELISA, IF, IHC-P, ICC, WB
Clonality	Polyclonal
Formulation	MSI2 Antibody is supplied in PBS containing 0.02% sodium azide.
Storage Instructions	MSI2 antibody can be stored at 4 °C, stable for one year. Avoid repeated freeze-thaw cycles. Antibodies should not be exposed to prolonged high temperatures.
Host	Rabbit
Uniprot ID	Q96DH6

### Technical Details

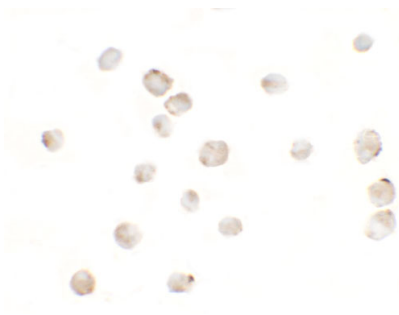
Immunogen	MSI2 antibody was raised against a 15 amino acid synthetic peptide near the amino terminus of human MSI2. The immunogen is located within amino acids 30 - 80 of MSI2.
Predicted Reactive Species	Bovine, Chicken
Cross Reactivity	MSI2 antibody is predicted to not cross-react with MSI1. Multiple isoforms of MSI2 are known to exist.
Isotype	IgG
Form	Liquid
Concentration	1 mg/mL

Purification	MSI2 Antibody is affinity chromatography purified via peptide column.
Suggested Dilutions	<p>MSI2 antibody can be used for detection of MSI2 by Western blot at 1 ug/mL. Antibody can also be used for immunohistochemistry starting at 5 ug/mL and immunocytochemistry starting at 5 ug/mL. For immunofluorescence start at 5 ug/mL.</p> <p>Antibody validated: Western Blot in mouse samples; Immunohistochemistry in mouse samples; Immunocytochemistry in mouse samples and Immunofluorescence in mouse samples. All other applications and species not yet tested. Optimal dilutions for each application should be determined by the researcher.</p>

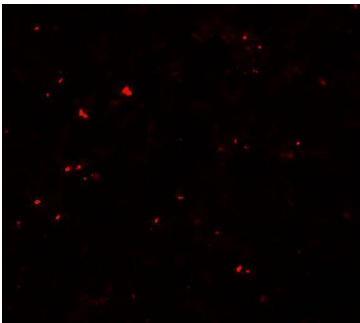
## Anti-MSI2 Antibody (A02898) Images



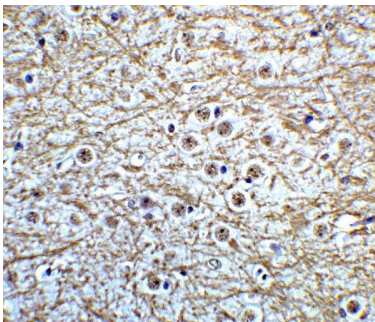
Western blot analysis of MSI2 in EL4 cell lysate with MSI2 antibody at 1 ug/mL.



Immunocytochemistry of MSI2 in EL4 cells with MSI2 antibody at 5 ug/mL.

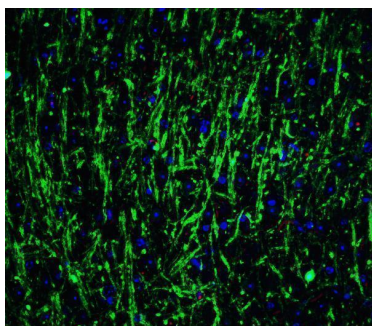


Immunofluorescence of MSI2 in EL4 cells with MSI2 antibody at 20 ug/mL.



Immunohistochemistry of MSI2 in mouse brain tissue with MSI2 Antibody at 5 ug/mL.

Immunofluorescence of MSI2 in mouse brain tissue with MSI2 Antibody at 20 ug/mL. Green: MSI2 antibody (A02898) Red: Phalloidin staining Blue: DAPI staining



## Submit a product review to Biocompare.com

Submit a review of this product to Biocompare.com to receive a \$20 Amazon.com giftcard! Your reviews help your fellow scientists make the right decisions. Thank you for your contribution.



Anti-MSI2 Antibody

For Research Use Only. Not for use in diagnostic procedures.