

Anti-S1PR2 Antibody

Catalog Number: A02904

About S1PR2

The Sphingosine 1-phosphate receptor 2 (S1PR2) protein was initially identified as G-protein coupled receptor thought to be involved in development (1) and was found to mediate sphingosine 1-phosphate (SPP)-induced cell rounding and neurite retraction (2). S1PR2 and the related protein S1PR3 (also known as EDG3) are also thought to mediate the SPP-induced cell proliferation, survival, and related signaling events (3). S1PR2 has also been found to be key regulator in acute vascular inflammation and may be a novel therapeutic target for vascular disorders (4).

Overview

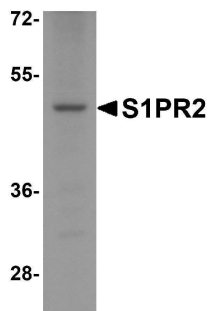
Product Name	Anti-S1PR2 Antibody
Reactive Species	Human, Mouse, Rat
Description	Boster Bio Anti-S1PR2 Antibody (Catalog # A02904). Tested in ELISA, WB, IHC-P, IF applications. This antibody reacts with Human, Mouse, Rat.
Application	ELISA, IF, IHC-P, WB
Clonality	Polyclonal
Formulation	S1PR2 antibody is supplied in PBS containing 0.02% sodium azide.
Storage Instructions	S1PR2 antibody can be stored at 4°C for three months and -20°C, stable for up to one year.
Host	Rabbit
Uniprot ID	O95136

Technical Details

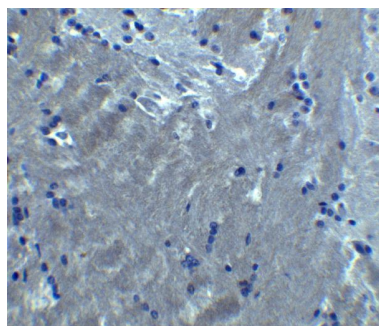
Immunogen	S1PR2 antibody was raised against an 16 amino acid peptide near the carboxy terminus of human S1PR2. The immunogen is located within amino acids 270 - 320 of S1PR2.
Predicted Reactive Species	Bovine, Chicken
Cross Reactivity	S1PR2 antibody is human, mouse and rat reactive.
Isotype	IgG
Form	Liquid
Concentration	1 mg/mL
Purification	S1PR2 antibody is affinity chromatography purified via peptide column.
Suggested Dilutions	S1PR2 antibody can be used for detection of S1PR2 by Western blot at 1 - 2 ug/ml. Antibody can also be used for immunohistochemistry at 10 ug/ml.

Antibody validated: Western Blot in human samples; Immunohistochemistry in mouse samples and Immunofluorescence in mouse samples. All other applications and species not yet tested. Optimal dilutions for each application should be determined by the researcher.

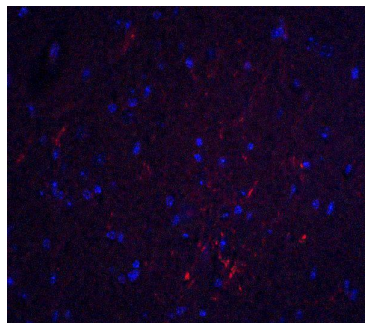
Anti-S1PR2 Antibody (A02904) Images



Western blot analysis of S1PR2 in HeLa cell lysate with S1PR2 antibody at 1 ug/ml.



Immunohistochemistry of S1PR2 in mouse brain tissue with S1PR2 antibody at 10 ug/ml.



Immunofluorescence of S1PR2 in mouse brain tissue with S1PR2 antibody at 20 ug/ml. Red: S1PR2 Antibody (A02904)
Blue: DAPI staining

Submit a product review to [Biocompare.com](https://www.biocompare.com)

Submit a review of this product to [Biocompare.com](https://www.biocompare.com) to receive a \$20 Amazon.com giftcard! Your reviews help your fellow scientists make the right decisions. Thank you for your contribution.



Anti-S1PR2 Antibody

For Research Use Only. Not for use in diagnostic procedures.