

Anti-S1PR2 Antibody

Catalog Number: A02904-2

About S1PR2

The Sphingosine 1-phosphate receptor 2 (S1PR2) protein was initially identified as G-protein coupled receptor thought to be involved in development (1) and was found to mediate sphingosine 1-phosphate (SPP)-induced cell rounding and neurite retraction (2). S1PR2 and the related protein S1PR3 (also known as EDG3) are also thought to mediate the SPP-induced cell proliferation, survival, and related signaling events (3). S1PR2 has also been found to be key regulator in acute vascular inflammation and may be a novel therapeutic target for vascular disorders (4).

Overview

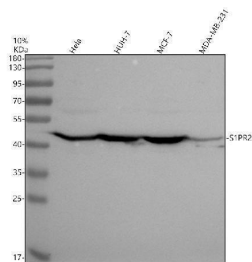
Product Name	Anti-S1PR2 Antibody
Reactive Species	Human, Mouse, Rat
Description	Boster Bio Anti-S1PR2 Antibody catalog # A02904-2. Tested in WB, ICC, IF, IP, ELISA applications. This antibody reacts with Human, Mouse, Rat.
Application	ELISA, IP, IF, ICC, WB
Clonality	Polyclonal
Formulation	500 ug/ml antibody with PBS, 0.02% NaN ₃ , 1 mg stabilizing protein and 50% glycerol *This antibody is supplied in a stabilized formulation. Compatibility with conjugation reactions depends on the chemistry of the conjugation method used. For conjugation methods that are not compatible with the stabilizing components present in this formulation, a carrier-free antibody format is required.
Storage Instructions	12 months from date of receipt at -20°C as supplied. 6 months at 2 to 8°C after reconstitution. Avoid repeated freezing and thawing.
Host	Rabbit
Uniprot ID	O95136

Technical Details

Immunogen	E.coli-derived human S1PR2 recombinant protein (Position: N280-T351).
Form	Liquid
Concentration	500 ug/ml
Purification	Immunogen affinity purified.
Suggested Dilutions	Western blot, 1:500-2000 Immunocytochemistry/Immunofluorescence, 1:50-400 Immunoprecipitation, 1:50 ELISA, 1:100-1000



Anti-S1PR2 Antibody (A02904-2) Images



Western blot analysis of S1PR2 using anti-S1PR2 antibody (A02904-2). Electrophoresis was performed on a 10% SDS-PAGE gel at 80V (Stacking gel) / 120V (Resolving gel) for 2 hours. The sample well of each lane was loaded with 30 ug of sample under reducing conditions. Lane 1: human HeLa whole cell lysates, Lane 2: human HUH-7 whole cell lysates, Lane 3: human MCF-7 whole cell lysates, Lane 4: human MDA-MB-231 whole cell lysates. After electrophoresis, proteins were transferred to a nitrocellulose membrane at 150 mA for 50-90 minutes. Blocked the membrane with 5% non-fat milk/TBS for 1.5 hour at RT. The membrane was incubated with rabbit anti-S1PR2 antigen affinity purified polyclonal antibody (A02904-2) at 1:1000 overnight at 4°C, then washed with TBS-0.1%Tween 3 times with 5 minutes each and probed with a goat anti-rabbit IgG-HRP secondary antibody at a dilution of 1:5000 for 1.5 hour at RT. The signal is developed using an ECL Plus Western Blotting Substrate (Catalog # AR1196-200) with Tanon 5200 system. A specific band was detected for S1PR2 at approximately 45 kDa. The expected band size for S1PR2 is at 39 kDa.

Submit a product review to Biocompare.com

Submit a review of this product to Biocompare.com to receive a \$20 Amazon.com giftcard! Your reviews help your fellow scientists make the right decisions. Thank you for your contribution.



Anti-S1PR2 Antibody

For Research Use Only. Not for use in diagnostic procedures.