

## Anti-PRMT6 Antibody (N-term)

Catalog Number: A02924

### About PRMT6

Arginine methylation is an irreversible post translational modification which has only recently been linked to protein activity. At least three types of PRMT enzymes have been identified in mammalian cells. These enzymes have been shown to have essential regulatory functions by methylation of key proteins in several fundamental areas. These protein include nuclear proteins, IL enhancer binding factor, nuclear factors, cell cycle proteins, signal transduction proteins, apoptosis proteins, and viral proteins. The mammalian PRMT family currently consists of 7 members that share two large domains of homology. Outside of these domains, epitopes were identified and antibodies against all 7 PRMT members have been developed.

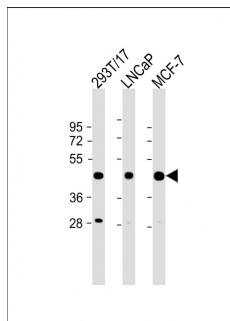
### Overview

|                      |  |
|----------------------|--|
| Product Name         | Anti-PRMT6 Antibody (N-term)   |
| Reactive Species     | Human  |
| Description          | Boster Bio Anti-PRMT6 Antibody (N-term) (Catalog # A02924). Tested in WB application(s). This antibody reacts with Human.                |
| Application          | WB   |
| Clonality            | Polyclonal   |
| Formulation          | Purified polyclonal antibody supplied in PBS with 0.09% (W/V) sodium azide.  |
| Storage Instructions | Maintain refrigerated at 2-8°C for up to 2 weeks. For long-term storage, store at -20°C in small aliquots to prevent freeze-thaw cycles. |
| Host                 | Rabbit   |
| Uniprot ID           | Q96LA8   |

### Technical Details

|                            |  |
|----------------------------|--|
| Immunogen                  | This PRMT6 antibody is generated from rabbits immunized with a KLH conjugated synthetic peptide between 19-48 amino acids from the N-terminal region of human PRMT6. |
| Predicted Reactive Species | Rat  |
| Isotype                    | Rabbit IgG   |
| Purification               | This antibody is purified through a protein A column, followed by peptide affinity purification.   |
| Suggested Dilutions        | WB: 1:2000   |

## Anti-PRMT6 Antibody (N-term) (A02924) Images



All lanes : Anti-PRMT6 (N-term) at 1:2000 dilution  
Lane 1: 293T/17 whole cell lysate  
Lane 2: LNCaP whole cell lysate  
Lane 3: MCF-7 whole cell lysate  
Lysates/proteins at 20  $\mu$ g per lane. Secondary Goat Anti-Rabbit IgG, (H+L), Peroxidase conjugated at 1/10000 dilution. Predicted band size : 42 kDa  
Blocking/Dilution buffer: 5% NFDM/TBST.

### Submit a product review to Biocompare.com

Submit a review of this product to Biocompare.com to receive a \$20 Amazon.com giftcard! Your reviews help your fellow scientists make the right decisions. Thank you for your contribution.



Anti-PRMT6 Antibody (N-term)

For Research Use Only. Not for use in diagnostic procedures.