

## Anti-PGC1 Beta PPARGC1B Antibody

Catalog Number: A02933-2

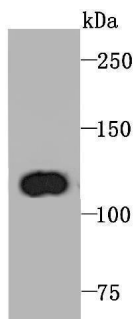
### Overview

Product Name	Anti-PGC1 Beta PPARGC1B Antibody
Reactive Species	Human, Rat
Description	Boster Bio Anti-PGC1 Beta PPARGC1B Antibody catalog # A02933-2. Tested in WB,IP,Flow Cytometry applications. This antibody reacts with Human,Rat.
Application	Flow Cytometry, IP, WB
Clonality	Polyclonal
Formulation	Rabbit IgG, 1mg/ml in PBS with 0.02% sodium azide, 50% glycerol, pH7.2
Storage Instructions	Store at -20°C for one year. For short term storage and frequent use, store at 4°C for up to one month. Avoid repeated freeze-thaw cycles.
Host	Rabbit
Uniprot ID	Q86YN6

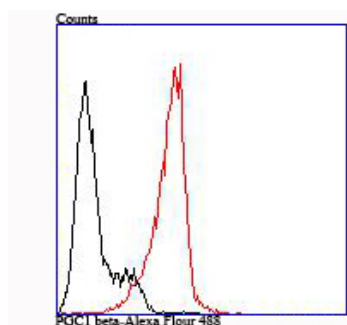
### Technical Details

Immunogen	Recombinant protein
Isotype	IgG
Form	Liquid
Concentration	1 mg/ml
Purification	ProA affinity purified
Suggested Dilutions	WB: 1:500-1:2,000 FC: 1:50-1:200 IP: 1:10-1:50

## Anti-PGC1 Beta PPARGC1B Antibody (A02933-2) Images



Western blot analysis of PGC1 beta on rat spleen tissue lysate using anti-PGC1 beta antibody at 1/1,000 dilution.



Flow cytometric analysis of HL-60 cells with PGC1 beta antibody at 1/100 dilution (red) compared with an unlabelled control (cells without incubation with primary antibody; black).

### Submit a product review to Biocompare.com

Submit a review of this product to Biocompare.com to receive a \$20 Amazon.com giftcard! Your reviews help your fellow scientists make the right decisions. Thank you for your contribution.



Anti-PGC1 Beta PPARGC1B Antibody

For Research Use Only. Not for use in diagnostic procedures.