

Anti-SCO1 Antibody

Catalog Number: A02934

About SCO1

Synthesis of cytochrome c oxidase 1 was initially identified in yeast as one of two cytochrome c oxidase (COX) assembly proteins that enable the assembly of cytochrome c holoenzyme, a complex that catalyzes the transfer of reducing equivalents from cytochrome c to molecular oxygen and pumps protons across the inner mitochondrial membrane. Like their yeast homologs, the function of both SCO1 and SCO2 are dependent on copper ion binding. Mutations in either gene can lead to cytochrome c oxidase respiratory chain defects, with a missense mutation in human SCO1 (P174L) associated with a fatal neonatal hepatopathy when the second allele is also non-functional, suggesting the pathology is due to loss of function. It has been suggested that this mutation alters the SCO1 affinity for the copper (I) ion, thus impairing the efficiency of copper transfer to the cytochrome c oxidase. At least two isoforms of SCO1 are known to exist and both are recognized by the SCO1 antibody. This SCO1 antibody has no cross-reactivity to SCO2.

Overview

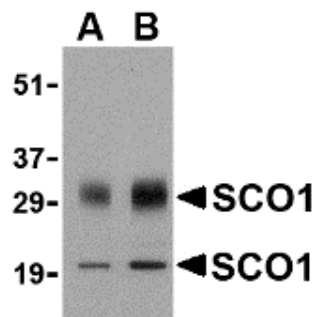
Product Name	Anti-SCO1 Antibody
Reactive Species	Human, Mouse, Rat
Description	Boster Bio Anti-SCO1 Antibody (Catalog # A02934). Tested in ELISA, WB, IHC-P, IF applications. This antibody reacts with Human, Mouse, Rat.
Application	ELISA, IF, IHC-P, WB
Clonality	Polyclonal
Formulation	SCO1 Antibody is supplied in PBS containing 0.02% sodium azide.
Storage Instructions	SCO1 antibody can be stored at 4°C for three months and -20°C, stable for up to one year. Avoid repeated freeze-thaw cycles. Antibodies should not be exposed to prolonged high temperatures.
Host	Rabbit
Uniprot ID	O75880

Technical Details

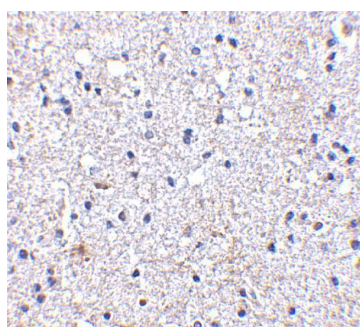
Immunogen	SCO1 antibody was raised against a 14 amino acid synthetic peptide from near the center of human SCO1. The immunogen is located within amino acids 100 - 150 of SCO1.
Predicted Reactive Species	Bovine, Chicken
Isotype	IgG
Form	Liquid
Concentration	1 mg/mL

Purification	SCO1 Antibody is affinity chromatography purified via peptide column.
Suggested Dilutions	SCO1 antibody can be used for detection of SCO1 by Western blot at 0.5 - 1 ug/mL. Antibody can also be used for immunohistochemistry starting at 2.5 ug/mL. For immunofluorescence start at 20 ug/mL. Antibody validated: Western Blot in human samples; Immunohistochemistry in human samples and Immunofluorescence in human samples. All other applications and species not yet tested. Optimal dilutions for each application should be determined by the researcher.

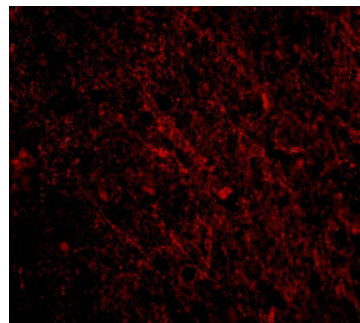
Anti-SCO1 Antibody (A02934) Images



Western blot analysis of SCO1 in human brain tissue lysate with SCO1 antibody at (A) 0.5 and (B) 1 ug/mL.



Immunohistochemistry of SCO1 in human brain tissue with SCO1 antibody at 2.5 ug/mL.



Immunofluorescence of SCO1 in Human Brain cells with SCO1 antibody at 20 ug/mL.

Submit a product review to [Biocompare.com](https://www.biocompare.com)

Submit a review of this product to [Biocompare.com](https://www.biocompare.com) to receive a \$20 Amazon.com giftcard! Your reviews help your fellow scientists make the right decisions. Thank you for your contribution.



Anti-SCO1 Antibody

For Research Use Only. Not for use in diagnostic procedures.