

## Anti-Kinesin-like protein KIF1B KIF1B Antibody

Catalog Number: A02951

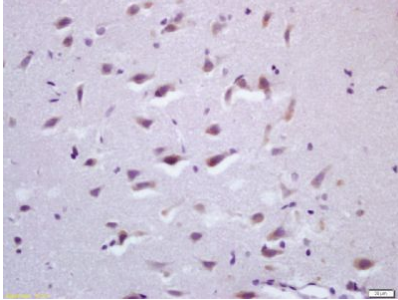
### Overview

Product Name	Anti-Kinesin-like protein KIF1B KIF1B Antibody
Reactive Species	Rat
Description	Boster Bio Anti-Kinesin-like protein KIF1B KIF1B Antibody catalog # A02951. Tested in WB,IHC,IF,ICC,ELISA applications. This antibody reacts with Rat.
Application	ELISA, IF, IHC, ICC, WB
Clonality	Polyclonal
Formulation	Rabbit IgG, 1mg/ml in PBS with 0.02% sodium azide, 50% glycerol, pH7.2
Storage Instructions	Store at -20°C for one year. For short term storage and frequent use, store at 4°C for up to one month. Avoid repeated freeze-thaw cycles.
Host	Rabbit
Uniprot ID	O60333

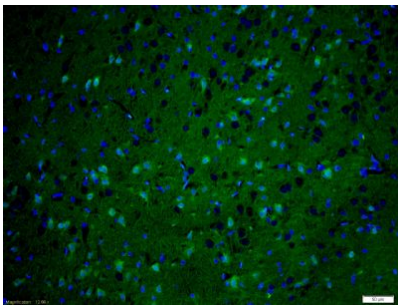
### Technical Details

Immunogen	KLH conjugated synthetic peptide derived from human KIF1B: 13-120/1816
Isotype	IgG
Form	Liquid
Concentration	1 mg/ml
Purification	The antibody was affinity-purified from rabbit antiserum by affinity-chromatography using epitope-specific immunogen and the purity is > 95% (by SDS-PAGE).
Suggested Dilutions	WB: 1:500-1:2000 IHC: 1:100-1:500 IF: 1:100-1:500 ICC: 1:100-1:500 ELISA: 1:5000-1:10000

## Anti-Kinesin-like protein KIF1B KIF1B Antibody (A02951) Images



Tissue/cell: rat brain tissue; 4% Paraformaldehyde-fixed and paraffin-embedded; Antigen retrieval: citrate buffer ( 0.01M, pH 6.0 ), Boiling bathing for 15min; Block endogenous peroxidase by 3% Hydrogen peroxide for 30min; Blocking buffer (normal goat serum) at 37°C for 20 min; Incubation: Anti-KIF1B Polyclonal Antibody, Unconjugated 1:200, overnight at 4°C.



Tissue/cell: rat brain tissue; 4% Paraformaldehyde-fixed and paraffin-embedded; Antigen retrieval: citrate buffer ( 0.01M, pH 6.0 ), Boiling bathing for 15min; Blocking buffer (normal goat serum) at 37°C for 20 min; Incubation: Anti-KIF1B Polyclonal Antibody, FITC conjugated at 1:200 dilution for 40 minutes at 37°C. DAPI(5ug/ml,blue) was used to stain the cell nucle.

### Submit a product review to Biocompare.com

Submit a review of this product to Biocompare.com to receive a \$20 Amazon.com giftcard! Your reviews help your fellow scientists make the right decisions. Thank you for your contribution.



Anti-Kinesin-like protein KIF1B KIF1B Antibody

For Research Use Only. Not for use in diagnostic procedures.