

Anti-Cytochrome c1 CYC1 Antibody

Catalog Number: A02958

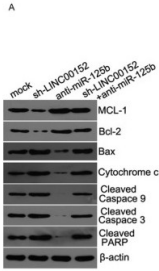
Overview

| | |
|----------------------|--|
| Product Name | Anti-Cytochrome c1 CYC1 Antibody |
| Reactive Species | Human, Mouse |
| Description | Boster Bio Anti-Cytochrome c1 CYC1 Antibody catalog # A02958. Tested in WB, IF, ELISA applications. This antibody reacts with Human, Mouse. |
| Application | ELISA, IF, WB |
| Clonality | Monoclonal 4F9 |
| Formulation | Liquid in PBS containing 50% glycerol, 0.5% stabilizing protein and 0.02% sodium azide. *This antibody is supplied in a stabilized formulation. Compatibility with conjugation reactions depends on the chemistry of the conjugation method used. For conjugation methods that are not compatible with the stabilizing components present in this formulation, a carrier-free antibody format is required. |
| Storage Instructions | Store at -20°C for one year. For short term storage and frequent use, store at 4°C for up to one month. Avoid repeated freeze-thaw cycles. |
| Host | Rabbit |
| Uniprot ID | P08574 |

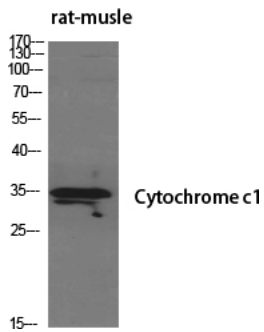
Technical Details

| | |
|---------------------|--|
| Immunogen | The antiserum was produced against synthesized peptide derived from human CYC1. AA range:132-181 |
| Isotype | IgG |
| Form | Liquid |
| Concentration | 1 mg/ml |
| Purification | Immunogen affinity purified |
| Suggested Dilutions | WB 1:500-2000 IF/ICC1:100-500 ELISA 1:5000-20000 |

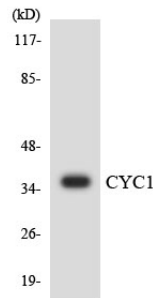
Anti-Cytochrome c1 CYC1 Antibody (A02958) Images



Western Blot analysis of various cells using Cytochrome c1 Polyclonal Antibody diluted at 1:500



Western Blot analysis of rat-muscle cells using Cytochrome c1 Polyclonal Antibody diluted at 1:500



Western blot analysis of the lysates from HUVEC cells using CYC1 antibody.

Submit a product review to Biocompare.com

Submit a review of this product to Biocompare.com to receive a \$20 Amazon.com giftcard! Your reviews help your fellow scientists make the right decisions. Thank you for your contribution.



Anti-Cytochrome c1 CYC1 Antibody

For Research Use Only. Not for use in diagnostic procedures.