

Anti-CITED2 Antibody

Catalog Number: A02966

About CITED2

CITED2 was initially identified as a potential transcriptional activator with significant homology to MSG1, a melanocyte-specific nuclear protein. CITED2 interacts with the histone acetyltransferase p300/CBP and acts as a coactivator to several DNA-binding transcription factors such as HIF-1 and AP-2. CITED2 also controls proliferation of mouse embryonic fibroblasts via the polycomb group genes Bmi-1 and Mel18 and the tumor suppressor Ink4a/Arf. CITED2 has also been found to be an essential regulator of adult hematopoietic stem cells (HSCs), with conditional deletion of CITED2 in the adult mouse resulting in the loss of HSCs, multilineage bone marrow failure and increased lethality.

Overview

Product Name	Anti-CITED2 Antibody
Reactive Species	Human, Mouse, Rat
Description	Boster Bio Anti-CITED2 Antibody (Catalog # A02966). Tested in ELISA, WB, IF applications. This antibody reacts with Human, Mouse, Rat.
Application	ELISA, IF, WB
Clonality	Polyclonal
Formulation	CITED2 Antibody is supplied in PBS containing 0.02% sodium azide.
Storage Instructions	CITED2 antibody can be stored at 4°C for three months and -20°C, stable for up to one year. Avoid repeated freeze-thaw cycles. Antibodies should not be exposed to prolonged high temperatures.
Host	Rabbit
Uniprot ID	Q99967

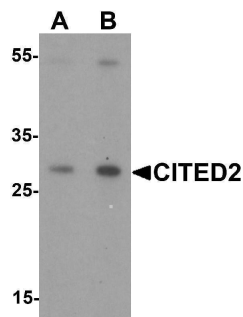
Technical Details

Immunogen	CITED2 antibody was raised against an 18 amino acid synthetic peptide near the amino terminus of human CITED2. The immunogen is located within the first 50 amino acids of CITED2.
Predicted Reactive Species	Bovine
Cross Reactivity	Multiple isoforms of CITED2 are known to exist.
Isotype	IgG
Form	Liquid
Concentration	1 mg/mL
Purification	CITED2 Antibody is affinity chromatography purified via peptide column.

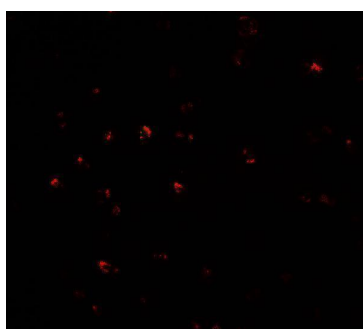
Suggested Dilutions

CITED2 antibody can be used for detection of CITED2 by Western blot at 1 - 2 ug/mL. For immunofluorescence start at 20 ug/mL.
Antibody validated: Western Blot in human samples and Immunofluorescence in human samples. All other applications and species not yet tested. Optimal dilutions for each application should be determined by the researcher.

Anti-CITED2 Antibody (A02966) Images



Western blot analysis of CITED2 in Jurkat cell lysate with CITED2 antibody at (A) 1 and (B) 2 ug/mL.



Immunofluorescence of CITED2 in Jurkat cells with CITED2 antibody at 20 ug/mL.

Submit a product review to [Biocompare.com](https://www.biocompare.com)

Submit a review of this product to [Biocompare.com](https://www.biocompare.com) to receive a \$20 Amazon.com giftcard! Your reviews help your fellow scientists make the right decisions. Thank you for your contribution.



Anti-CITED2 Antibody

For Research Use Only. Not for use in diagnostic procedures.