

Anti-Islet 1/ISL1 Antibody Picoband®

Catalog Number: A02969-4

About ISL1

Insulin gene enhancer protein ISL-1 is a protein that in humans is encoded by the *isl1* gene. This gene encodes a member of the LIM/homeodomain family of transcription factors. The encoded protein binds to the enhancer region of the insulin gene, among others, and may play an important role in regulating insulin gene expression. The encoded protein is central to the development of pancreatic cell lineages and may also be required for motor neuron generation. Mutations in this gene have been associated with maturity-onset diabetes of the young.

Overview

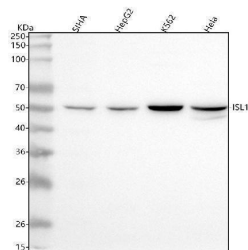
Product Name	Anti-Islet 1/ISL1 Antibody Picoband®
Reactive Species	Human
Description	Boster Bio Anti-Islet 1/ISL1 Antibody Picoband® catalog # A02969-4. Tested in WB, ELISA applications. This antibody reacts with Human. The brand Picoband indicates this is a premium antibody that guarantees superior quality, high affinity, and strong signals with minimal background in Western blot applications. Only our best-performing antibodies are designated as Picoband, ensuring unmatched performance.
Application	ELISA, WB
Clonality	Polyclonal
Formulation	Each vial contains 4 mg Trehalose, 0.9 mg NaCl, 0.2 mg Na ₂ HPO ₄ .
Storage Instructions	At -20°C for one year from date of receipt. After reconstitution, at 4°C for one month. It can also be aliquotted and stored frozen at -20°C for six months. Avoid repeated freezing and thawing.
Host	Rabbit
Uniprot ID	P61371

Technical Details

Immunogen	E.coli-derived human ISL1 recombinant protein (Position: D118-Q289). Human Islet 1/ISL1 shares 100% amino acid (aa) sequence identity with both mouse and rat ISL1.
Recommended Detection Systems	Boster recommends Enhanced Chemiluminescent Kit with anti-Rabbit IgG (EK1002) for Western blot.
Form	Lyophilized
Concentration	Adding 0.2 ml of distilled water will yield a concentration of 500 ug/ml.
Purification	Immunogen affinity purified.
Suggested Dilutions	Western blot, 0.25-0.5 ug/ml, Human

ELISA, 0.1-0.5 ug/ml, -

Anti-Islet 1/ISL1 Antibody Picoband® (A02969-4) Images



Western blot analysis of Islet 1/ISL1 using anti-Islet 1/ISL1 antibody (A02969-4). Electrophoresis was performed on a 5-20% SDS-PAGE gel at 70V (Stacking gel) / 90V (Resolving gel) for 2-3 hours. The sample well of each lane was loaded with 30 ug of sample under reducing conditions. Lane 1: human SIHA whole cell lysates, Lane 2: human HepG2 whole cell lysates, Lane 3: human K562 whole cell lysates, Lane 4: human Hela whole cell lysates. After electrophoresis, proteins were transferred to a nitrocellulose membrane at 150 mA for 50-90 minutes. Blocked the membrane with 5% non-fat milk/TBS for 1.5 hour at RT. The membrane was incubated with rabbit anti-Islet 1/ISL1 antigen affinity purified polyclonal antibody (Catalog # A02969-4) at 0.5 ug/mL overnight at 4°C, then washed with TBS-0.1%Tween 3 times with 5 minutes each and probed with a goat anti-rabbit IgG-HRP secondary antibody at a dilution of 1:5000 for 1.5 hour at RT. The signal is developed using an Enhanced Chemiluminescent detection (ECL) kit (Catalog # EK1002) with Tanon 5200 system. A specific band was detected for Islet 1/ISL1 at approximately 50 kDa. The expected band size for Islet 1/ISL1 is at 39 kDa.

Submit a product review to Biocompare.com

Submit a review of this product to Biocompare.com to receive a \$20 Amazon.com giftcard! Your reviews help your fellow scientists make the right decisions. Thank you for your contribution.



Anti-Islet 1/ISL1 Antibody

For Research Use Only. Not for use in diagnostic procedures.