

Anti-GOLPH2 GOLM1 Antibody

Catalog Number: A02975

About GOLM1

GOLPH2, also known as GOLM1, is a Golgi phosphoprotein that has a short cytoplasmic N-terminal domain, a membrane spanning region, and a longer C-terminal domain. It was initially identified as a possible marker for Alzheimer's disease, although later studies have demonstrated that the GOLPH2 gene does not contribute to risk of this disease. GOLPH2 expression has been reported higher in prostate cancer tissues compared to normal prostate tissue, suggesting that GOLPH2 can be used as an additional positive marker for tissue-based diagnosis of prostate cancer. It has been suggested that GOLPH2 expression in hepatocellular carcinomas (HCCs) and serum may also serve as tumor markers for HCCs.

Overview

Product Name	Anti-GOLPH2 GOLM1 Antibody
Reactive Species	Human, Mouse, Rat
Description	Boster Bio Anti-GOLPH2 GOLM1 Antibody (Catalog # A02975). Tested in ELISA, WB, IHC-P, IF applications. This antibody reacts with Human, Mouse, Rat.
Application	ELISA, IF, IHC-P, WB
Clonality	Polyclonal
Formulation	GOLPH2 Antibody is supplied in PBS containing 0.02% sodium azide.
Storage Instructions	GOLPH2 antibody can be stored at 4°C for three months and -20°C, stable for up to one year. Avoid repeated freeze-thaw cycles. Antibodies should not be exposed to prolonged high temperatures.
Host	Rabbit
Uniprot ID	Q8NBJ4

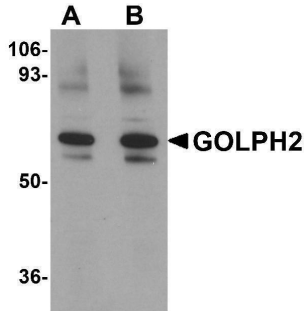
Technical Details

Immunogen	GOLPH2 antibody was raised against an 18 amino acid synthetic peptide from near the center of human GOLPH2. The immunogen is located within amino acids 130 - 180 of GOLPH2.
Predicted Reactive Species	Bovine
Isotype	IgG
Form	Liquid
Concentration	1 mg/mL
Purification	GOLPH2 Antibody is affinity chromatography purified via peptide column.
Suggested Dilutions	GOLPH2 antibody can be used for detection of GOLPH2 by Western blot at 0.25 - 0.5 ug/mL. Antibody can also be used for immunohistochemistry starting at 2.5 ug/mL. For

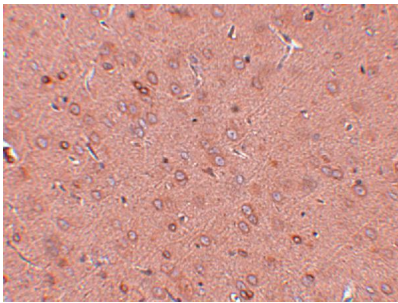
immunofluorescence start at 20 ug/mL.

Antibody validated: Western Blot in rat samples; Immunohistochemistry in rat samples and Immunofluorescence in rat samples. All other applications and species not yet tested. Optimal dilutions for each application should be determined by the researcher.

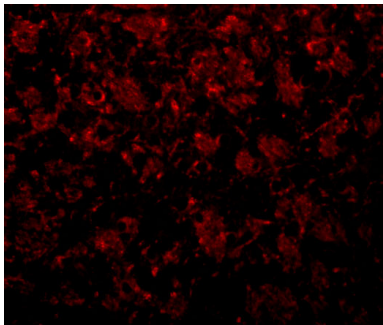
Anti-GOLPH2 GOLM1 Antibody (A02975) Images



Western blot analysis of GOLPH2 in rat brain tissue lysate with GOLPH2 antibody at (A) 0.25 and (B) 0.5 ug/mL.



Immunohistochemistry of GOLPH2 in rat brain tissue with GOLPH2 antibody at 2.5 ug/mL.



Immunofluorescence of GOLPH2 in rat brain tissue with GOLPH2 antibody at 20 ug/mL.

Submit a product review to [Biocompare.com](https://www.biocompare.com)

Submit a review of this product to [Biocompare.com](https://www.biocompare.com) to receive a \$20 Amazon.com giftcard! Your reviews help your fellow scientists make the right decisions. Thank you for your contribution.



Anti-GOLPH2 GOLM1 Antibody

For Research Use Only. Not for use in diagnostic procedures.