

Anti-Lymphocyte-specific protein 1 LSP1 Antibody

Catalog Number: A02992-1

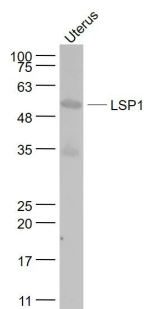
Overview

Product Name	Anti-Lymphocyte-specific protein 1 LSP1 Antibody
Reactive Species	Human, Mouse, Rat
Description	Boster Bio Anti-Lymphocyte-specific protein 1 LSP1 Antibody catalog # A02992-1. Tested in WB,ELISA,IHC,IF applications. This antibody reacts with Human,Mouse,Rat.
Application	ELISA, IF, IHC, WB
Clonality	Polyclonal
Formulation	Rabbit IgG, 1mg/ml in PBS with 0.02% sodium azide, 50% glycerol, pH7.2
Storage Instructions	Store at -20°C for one year. For short term storage and frequent use, store at 4°C for up to one month. Avoid repeated freeze-thaw cycles.
Host	Rabbit
Uniprot ID	P33241

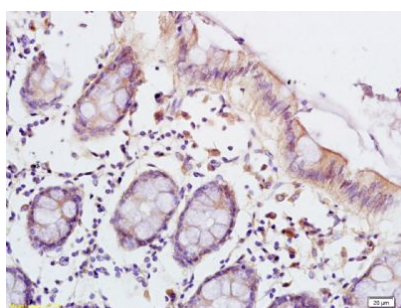
Technical Details

Immunogen	KLH conjugated synthetic peptide derived from human LSP1: 241-339/339
Isotype	IgG
Form	Liquid
Concentration	1 mg/ml
Purification	ProA affinity purified
Suggested Dilutions	WB: 1:500-1:2000 ELISA: 1:5000-1:10000 IHC: 1:100-1:500 IF: 1:100-1:500

Anti-Lymphocyte-specific protein 1 LSP1 Antibody (A02992-1) Images



Uterus (Mouse) Lysate at 40 ug Primary: Anti- LSP1 at 1/1000 dilution



Tissue/cell: human colon carcinoma; 4% Paraformaldehyde-fixed and paraffin-embedded; Antigen retrieval: citrate buffer (0.01M, pH 6.0), Boiling bathing for 15min; Block endogenous peroxidase by 3% Hydrogen peroxide for 30min; Blocking buffer (normal goat serum) at 37°C for 20 min; Incubation: Anti-LSP1 Polyclonal Antibody, Unconjugated 1:200, overnight at 4°C.

Submit a product review to Biocompare.com

Submit a review of this product to Biocompare.com to receive a \$20 Amazon.com giftcard! Your reviews help your fellow scientists make the right decisions. Thank you for your contribution.



Anti-Lymphocyte-specific protein 1 LSP1 Antibody

For Research Use Only. Not for use in diagnostic procedures.