

Anti-PITX1 Antibody

Catalog Number: A02993-2

About PITX1

This gene encodes a member of the RIEG/PITX homeobox family, which is in the bicoid class of homeodomain proteins. Members of this family are involved in organ development and left-right asymmetry. This protein acts as a transcriptional regulator involved in basal and hormone-regulated activity of prolactin.

Overview

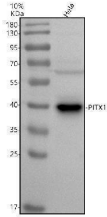
Product Name	Anti-PITX1 Antibody
Reactive Species	Human, Mouse
Description	Boster Bio Anti-PITX1 Antibody catalog # A02993-2. Tested in WB, IHC, ICC/IF, IP, ELISA applications. This antibody reacts with Human, Mouse.
Application	ELISA, IP, IF, IHC, ICC, WB
Clonality	Polyclonal
Formulation	500 ug/ml antibody with PBS, 0.02% NaN ₃ , 1 mg stabilizing protein and 50% glycerol *This antibody is supplied in a stabilized formulation. Compatibility with conjugation reactions depends on the chemistry of the conjugation method used. For conjugation methods that are not compatible with the stabilizing components present in this formulation, a carrier-free antibody format is required.
Storage Instructions	12 months from date of receipt -20°C as supplied. 6 months 2 to 8°C after reconstitution. Avoid repeated freezing and thawing.
Host	Rabbit
Uniprot ID	P78337

Technical Details

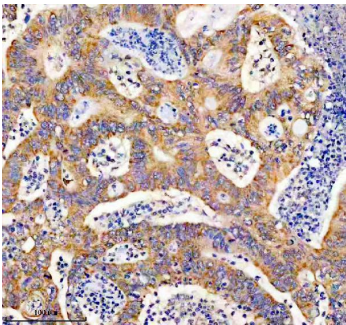
Immunogen	E.coli-derived human PITX1 recombinant protein (Position: 3-311).
Form	Liquid
Concentration	500 ug/ml
Purification	Immunogen affinity purified.
Suggested Dilutions	Western blot, 1:500-2000 Immunohistochemistry, 1:50-400 Immunocytochemistry/Immunofluorescence, 1:50-400 Immunoprecipitation, 1:250-300 ELISA, 1:100-1000



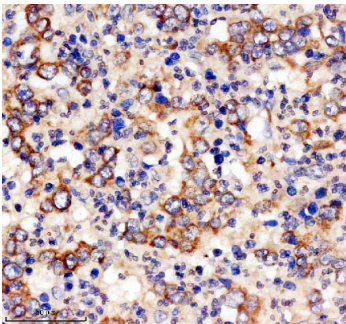
Anti-PITX1 Antibody (A02993-2) Images



Western blot analysis of PITX1 using anti-PITX1 antibody (A02993-2). Electrophoresis was performed on a 10% SDS-PAGE gel at 80V (Stacking gel) / 120V (Resolving gel) for 2 hours. The sample well of each lane was loaded with 30 ug of sample under reducing conditions. Lane 1: human Hela whole cell lysates. After electrophoresis, proteins were transferred to a nitrocellulose membrane at 150 mA for 50-90 minutes. Blocked the membrane with 5% non-fat milk/TBS for 1.5 hour at RT. The membrane was incubated with rabbit anti-PITX1 antigen affinity purified polyclonal antibody (A02993-2) at 1:1000 overnight at 4°C, then washed with TBS-0.1% Tween 3 times with 5 minutes each and probed with a goat anti-rabbit IgG-HRP secondary antibody at a dilution of 1:5000 for 1.5 hour at RT. The signal is developed using an ECL Plus Western Blotting Substrate (Catalog # AR1196-200) with Tanon 5200 system. A specific band was detected for PITX1 at approximately 40 kDa. The expected band size for PITX1 is at 34 kDa.



IHC analysis of PITX1 using anti-PITX1 antibody (A02993-2). PITX1 was detected in a paraffin-embedded section of human colon cancer tissue. Heat mediated antigen retrieval was performed in EDTA buffer (pH 8.0, epitope retrieval solution). The tissue section was blocked with 10% goat serum. The tissue section was then incubated with 1:200 rabbit anti-PITX1 Antibody (A02993-2) overnight at 4°C. Peroxidase Conjugated Goat Anti-rabbit IgG was used as secondary antibody and incubated for 30 minutes at 37°C. The tissue section was developed using HRP Conjugated Rabbit IgG Super Vision Assay Kit (Catalog # SV0002) with DAB as the chromogen.



IHC analysis of PITX1 using anti-PITX1 antibody (A02993-2). PITX1 was detected in a paraffin-embedded section of human stomach cancer tissue. Heat mediated antigen retrieval was performed in EDTA buffer (pH 8.0, epitope retrieval solution). The tissue section was blocked with 10% goat serum. The tissue section was then incubated with 1:200 rabbit anti-PITX1 Antibody (A02993-2) overnight at 4°C. Peroxidase Conjugated Goat Anti-rabbit IgG was used as secondary antibody and incubated for 30 minutes at 37°C. The tissue section was developed using HRP Conjugated Rabbit IgG Super Vision Assay Kit (Catalog # SV0002) with DAB as the chromogen.

Submit a product review to [Biocompare.com](https://www.biocompare.com)

Submit a review of this product to [Biocompare.com](https://www.biocompare.com) to receive a \$20 Amazon.com giftcard! Your reviews help your fellow scientists make the right decisions. Thank you for your contribution.



Anti-PITX1 Antibody

For Research Use Only. Not for use in diagnostic procedures.