

## Anti-Scramblase 1/PLSCR1 Antibody Picoband®

Catalog Number: A02995-2

### About PLSCR1

Phospholipid scramblase 1 is a protein that in human is encoded by the PLSCR1 gene. This gene is mapped to 3q24.

### Overview

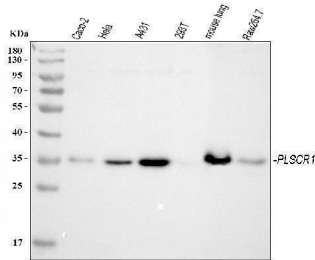
Product Name	Anti-Scramblase 1/PLSCR1 Antibody Picoband®
Reactive Species	Human, Mouse
Description	Boster Bio Anti-Scramblase 1/PLSCR1 Antibody Picoband® catalog # A02995-2. Tested in ELISA, IHC, WB applications. This antibody reacts with Human, Mouse. The brand Picoband indicates this is a premium antibody that guarantees superior quality, high affinity, and strong signals with minimal background in Western blot applications. Only our best-performing antibodies are designated as Picoband, ensuring unmatched performance.
Application	ELISA, IHC, WB
Clonality	Polyclonal
Formulation	Each vial contains 4mg Trehalose, 0.9mg NaCl, 0.2mg Na <sub>2</sub> HPO <sub>4</sub> , 0.05mg NaN <sub>3</sub> .
Storage Instructions	Store at -20°C for one year from date of receipt. After reconstitution, at 4°C for one month. It can also be aliquotted and stored frozen at -20°C for six months. Avoid repeated freeze-thaw cycles.
Host	Rabbit
Uniprot ID	O15162

### Technical Details

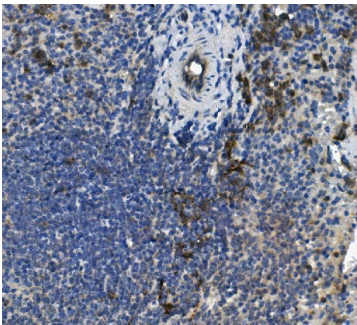
Immunogen	E.coli-derived human Scramblase 1/PLSCR1 recombinant protein (Position: M1-S54).
Recommended Detection Systems	Boster recommends Enhanced Chemiluminescent Kit with anti-Rabbit IgG (EK1002) for Western blot, and HRP Conjugated anti- Rabbit IgG Super Vision Assay Kit (SV0002-1) for IHC(P).
Cross Reactivity	No cross-reactivity with other proteins.
Isotype	Rabbit IgG
Form	Lyophilized
Concentration	Adding 0.2 ml of distilled water will yield a concentration of 500 ug/ml.
Purification	Immunogen affinity purified.
Suggested Dilutions	Western blot, 0.1-0.25ug/ml, Human, Mouse Immunohistochemistry (Paraffin-embedded Section), 0.5-1ug/ml, Mouse

	ELISA, 0.1-0.5ug/ml, -
--	------------------------

## Anti-Scramblase 1/PLSCR1 Antibody Picoband® (A02995-2) Images



Western blot analysis of PLSCR1 using anti-PLSCR1 antibody (A02995-2). Electrophoresis was performed on a 5-20% SDS-PAGE gel at 70V (Stacking gel) / 90V (Resolving gel) for 2-3 hours. The sample well of each lane was loaded with 30 ug of sample under reducing conditions. Lane 1: human CACO-2 whole cell lysates, Lane 2: human Hela whole cell lysates, Lane 3: human A431 whole cell lysates, Lane 4: human 293T whole cell lysates, Lane 5: mouse lung tissue lysates, Lane 6: mouse RAW264.7 whole cell lysates. After electrophoresis, proteins were transferred to a nitrocellulose membrane at 150 mA for 50-90 minutes. Blocked the membrane with 5% non-fat milk/TBS for 1.5 hour at RT. The membrane was incubated with rabbit anti-PLSCR1 antigen affinity purified polyclonal antibody (Catalog # A02995-2) at 0.25 ug/mL overnight at 4°C, then washed with TBS-0.1%Tween 3 times with 5 minutes each and probed with a goat anti-rabbit IgG-HRP secondary antibody at a dilution of 1:5000 for 1.5 hour at RT. The signal is developed using an Enhanced Chemiluminescent detection (ECL) kit (Catalog # EK1002) with Tanon 5200 system. A specific band was detected for PLSCR1 at approximately 35 kDa. The expected band size for PLSCR1 is at 35 kDa.



IHC analysis of PLSCR1 using anti-PLSCR1 antibody (A02995-2). PLSCR1 was detected in paraffin-embedded section of mouse spleen tissue. Heat mediated antigen retrieval was performed in EDTA buffer (pH8.0, epitope retrieval solution). The tissue section was blocked with 10% goat serum. The tissue section was then incubated with 1ug/ml rabbit anti-PLSCR1 Antibody (A02995-2) overnight at 4°C. Biotinylated goat anti-rabbit IgG was used as secondary antibody and incubated for 30 minutes at 37°C. The tissue section was developed using Streptavidin-Biotin-Complex (SABC) (Catalog # SA1022) with DAB as the chromogen.

### Submit a product review to [Biocompare.com](https://www.biocompare.com)

Submit a review of this product to [Biocompare.com](https://www.biocompare.com) to receive a \$20 Amazon.com giftcard! Your reviews help your fellow scientists make the right decisions. Thank you for your contribution.



### Anti-Scramblase 1/PLSCR1 Antibody

For Research Use Only. Not for use in diagnostic procedures.