

## Anti-Spatascin SPG11 Antibody

Catalog Number: A03005

### About SPG11

Hereditary spastic paraplegias (HSPs) are genetically and phenotypically heterogeneous disorders. Spastic paraplegia with thinning of the corpus callosum (ARHSP-TCC) is a relatively frequent form of complicated hereditary spastic paraplegia (cHSP) in which mental retardation and muscle stiffness at onset are followed by slowly progressive paraparesis and cognitive deterioration. Mutations of the SPG11 gene encoding the spatascin protein have been identified as a major cause of HSP-TCC. Spatascin is a potential transmembrane protein that is phosphorylated upon DNA damage. It is expressed in all structures of the brain, with a high expression in the cerebellum. SPG11 mutations may occur more frequently in familial than sporadic forms of cHSP without TCC. Kjellin syndrome is found to be associated with mutations in not only the SPG15 gene but also SPG11 gene. Recent studies show Parkinsonism may initiate SPG11-linked HSP TCC and that SPG11 may cause juvenile Parkinsonism.

### Overview

|                      |  |
|----------------------|--|
| Product Name         | Anti-Spatascin SPG11 Antibody  |
| Reactive Species     | Human, Mouse, Rat  |
| Description          | Boster Bio Anti-Spatascin SPG11 Antibody (Catalog # A03005). Tested in ELISA, WB, IHC-P applications. This antibody reacts with Human, Mouse, Rat.   |
| Application          | ELISA, IHC-P, WB   |
| Clonality            | Polyclonal   |
| Formulation          | SPG11 Antibody is supplied in PBS containing 0.02% sodium azide.   |
| Storage Instructions | SPG11 antibody can be stored at 4°C for three months and -20°C, stable for up to one year. Avoid repeated freeze-thaw cycles. Antibodies should not be exposed to prolonged high temperatures. |
| Host                 | Rabbit   |
| Uniprot ID           | Q96J17   |

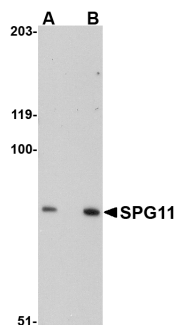
### Technical Details

|                            |   |
|----------------------------|---|
| Immunogen                  | SPG11 antibody was raised against a 15 amino acid synthetic peptide near the carboxy terminus of human SPG11. The immunogen is located within amino acids 2360 - 2410 of SPG11. |
| Predicted Reactive Species | Bovine  |
| Isotype                    | IgG   |
| Form                       | Liquid  |
| Concentration              | 1 mg/mL   |
| Purification               | SPG11 Antibody is affinity chromatography purified via peptide column.  |

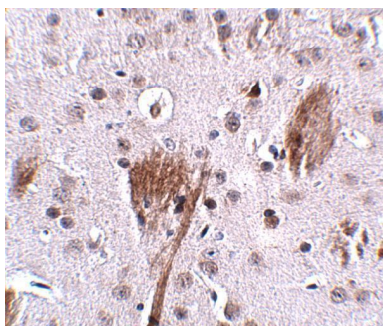
Suggested Dilutions

SPG11 antibody can be used for detection of SPG11 by Western blot at 0.5 - 1 ug/mL. Antibody can also be used for immunohistochemistry starting at 2.5 ug/mL.  
Antibody validated: Western Blot in mouse samples and Immunohistochemistry in mouse samples. All other applications and species not yet tested. Optimal dilutions for each application should be determined by the researcher.

## Anti-Spatacsin SPG11 Antibody (A03005) Images



Western blot analysis of SPG11 in mouse heart tissue lysate with SPG11 antibody at (A) 0.5 and (B) 1 ug/mL.



Immunohistochemistry of SPG11 in mouse brain tissue with SPG11 antibody at 2.5 ug/mL.

### Submit a product review to [Biocompare.com](https://www.biocompare.com)

Submit a review of this product to [Biocompare.com](https://www.biocompare.com) to receive a \$20 Amazon.com giftcard! Your reviews help your fellow scientists make the right decisions. Thank you for your contribution.



### Anti-Spatacsin SPG11 Antibody

For Research Use Only. Not for use in diagnostic procedures.