

Anti-Imp3 Rabbit Polyclonal Antibody

Catalog Number: A03007

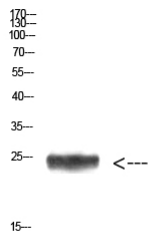
Overview

Product Name	Anti-Imp3 Rabbit Polyclonal Antibody
Reactive Species	Human, Mouse, Rat
Description	Boster Bio Anti-Imp3 Rabbit Polyclonal Antibody catalog # A03007. Tested in ELISA, IHC-P, WB applications. This antibody reacts with Human, Mouse, Rat.
Application	ELISA, WB
Clonality	Polyclonal
Formulation	Liquid in PBS containing 50% glycerol, 0.5% stabilizing protein and 0.02% sodium azide. *This antibody is supplied in a stabilized formulation. Compatibility with conjugation reactions depends on the chemistry of the conjugation method used. For conjugation methods that are not compatible with the stabilizing components present in this formulation, a carrier-free antibody format is required.
Storage Instructions	Store at -20°C for one year. For short term storage and frequent use, store at 4°C for up to one month. Avoid repeated freeze-thaw cycles.
Host	Rabbit
Uniprot ID	Q9NV31

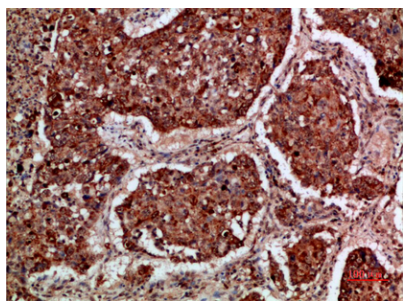
Technical Details

Immunogen	Synthetic peptide from human protein at AA range: 135-184
Isotype	IgG
Form	Liquid
Concentration	1 mg/ml
Purification	The antibody was affinity-purified from rabbit serum by affinity-chromatography using specific immunogen.
Suggested Dilutions	WB 1:500-2000 ELISA 1:10000-20000

Anti-Imp3 Rabbit Polyclonal Antibody (A03007) Images



Western Blot analysis of HEPG2 cells using Antibody diluted at 1000. Secondary antibody was diluted at 1:20000



Immunohistochemical analysis of paraffin-embedded human lung-cancer, antibody was diluted at 1:200

Submit a product review to Biocompare.com

Submit a review of this product to Biocompare.com to receive a \$20 Amazon.com giftcard! Your reviews help your fellow scientists make the right decisions. Thank you for your contribution.



Anti-Imp3 Rabbit Polyclonal Antibody

For Research Use Only. Not for use in diagnostic procedures.