

Anti-Phospho-Cyclin H (T315) CCNH Antibody

Catalog Number: A03013T315

About CCNH

May play an important role in fibrillogenesis by controlling lateral growth of collagen II fibrils.

Yoshioka H., J. Biol. Chem. 265:6423-6426(1990).

Annunen S., Am. J. Hum. Genet. 65:974-983(1999).

Zhidkova N.I., J. Biol. Chem. 270:9486-9493(1995).

Overview

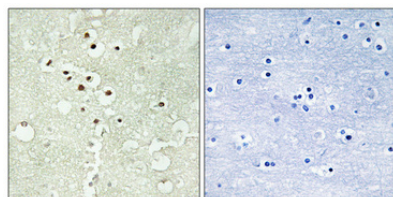
Product Name	Anti-Phospho-Cyclin H (T315) CCNH Antibody
Reactive Species	Human, Mouse, Rat
Description	Boster Bio Anti-Phospho-Cyclin H (T315) CCNH Antibody catalog # A03013T315. Tested in ELISA, IHC, WB applications. This antibody reacts with Human, Mouse, Rat.
Application	ELISA, IHC, WB
Clonality	Polyclonal
Formulation	Liquid in PBS containing 50% glycerol, 0.5% BSA and 0.02% sodium azide.
Storage Instructions	Store at -20°C for one year. For short term storage and frequent use, store at 4°C for up to one month. Avoid repeated freeze-thaw cycles.
Host	Rabbit
Uniprot ID	P51946

Technical Details

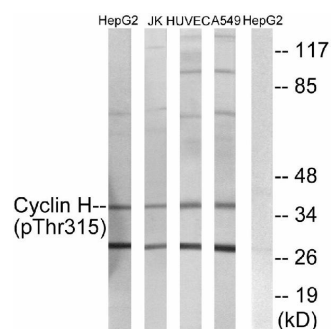
Immunogen	Synthesized peptide derived from human Cyclin H around the phosphorylation site of T315.
Predicted Reactive Species	Boar, Bovine, Canine, Golden Hamster
Isotype	IgG
Form	Liquid
Concentration	1 mg/ml
Purification	The antibody was affinity-purified from rabbit antiserum by affinity-chromatography using epitope-specific immunogen.
Suggested Dilutions	Dilute the sample so that the expected range of concentrations fall within the detection range of this kit.

If the expected range of concentration is unknown, a pilot test should be conducted to decide the optimal dilution ratio for your samples.
Some PubMed article(s) citing the expression level of this target are as follows:
Boster Bio's internal QC testing used:
WB 1:500-1:2000
IHC 1:100-1:300
ELISA 1:10000

Anti-Phospho-Cyclin H (T315) CCNH Antibody (A03013T315) Images



Immunohistochemical analysis of paraffin-embedded Human brain. Antibody was diluted at 1:100 (4°C overnight). High-pressure and temperature Tris-EDTA, pH8.0 was used for antigen retrieval. Negative control (right) obtained from antibody was pre-absorbed by immunogen peptide.



Western blot analysis of lysates from HepG2 cells, Jurkat cells, HUVEC cells and A549 cells, using Cyclin H (Phospho-Thr315) Antibody. The lane on the right is blocked with the phospho peptide.

Submit a product review to Biocompare.com

Submit a review of this product to Biocompare.com to receive a \$20 Amazon.com giftcard! Your reviews help your fellow scientists make the right decisions. Thank you for your contribution.



Anti-Phospho-Cyclin H (T315) CCNH Antibody