

Anti-ASCL1/Mash1 Antibody

Catalog Number: A03023

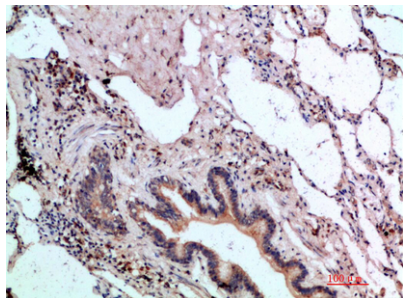
Overview

Product Name	Anti-ASCL1/Mash1 Antibody
Reactive Species	Human, Mouse, Rat
Description	Boster Bio Anti-ASCL1/Mash1 Antibody catalog # A03023. Tested in IHC, IF, ELISA applications. This antibody reacts with Human, Mouse, Rat.
Application	ELISA, IF, IHC
Clonality	Polyclonal
Formulation	PBS, pH 7.4, containing 0.02% sodium azide as Preservative and 50% Glycerol.
Storage Instructions	Store at -20°C for one year. For short term storage and frequent use, store at 4°C for up to one month. Avoid repeated freeze-thaw cycles.
Host	Rabbit
Uniprot ID	P50553

Technical Details

Immunogen	Synthetic peptide from human protein at AA range: 190-236
Isotype	IgG
Form	Liquid
Concentration	1 mg/ml
Purification	Immunogen affinity purified
Suggested Dilutions	IHC 1:50-200 ELISA 1:10000-20000 IF 1:50-200

Anti-ASCL1/Mash1 Antibody (A03023) Images



Immunohistochemical analysis of paraffin-embedded human lung, antibody was diluted at 1:200

Submit a product review to [Biocompare.com](https://www.biocompare.com)

Submit a review of this product to [Biocompare.com](https://www.biocompare.com) to receive a \$20 Amazon.com giftcard! Your reviews help your fellow scientists make the right decisions. Thank you for your contribution.



Anti-ASCL1/Mash1 Antibody

For Research Use Only. Not for use in diagnostic procedures.