

## Anti-PPP3CA Antibody

Catalog Number: A03026

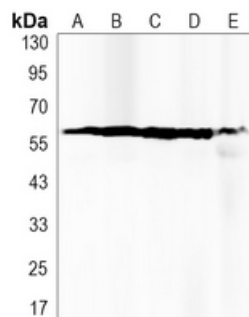
### Overview

|                      |                                                                                                                                            |
|----------------------|--------------------------------------------------------------------------------------------------------------------------------------------|
| Product Name         | Anti-PPP3CA Antibody                                                                                                                       |
| Reactive Species     | Human, Mouse, Rat                                                                                                                          |
| Description          | Boster Bio Anti-PPP3CA Antibody catalog # A03026. Tested in WB applications. This antibody reacts with Human,Mouse,Rat.                    |
| Application          | WB                                                                                                                                         |
| Clonality            | Polyclonal                                                                                                                                 |
| Formulation          | Rabbit IgG, 1mg/ml in PBS with 0.02% sodium azide, 50% glycerol, pH7.2                                                                     |
| Storage Instructions | Store at -20°C for one year. For short term storage and frequent use, store at 4°C for up to one month. Avoid repeated freeze-thaw cycles. |
| Host                 | Rabbit                                                                                                                                     |
| Uniprot ID           | Q08209                                                                                                                                     |

### Technical Details

|                     |                                                                                                                                                             |
|---------------------|-------------------------------------------------------------------------------------------------------------------------------------------------------------|
| Immunogen           | Synthetic peptide, corresponding to Human PPP3CA.                                                                                                           |
| Isotype             | IgG                                                                                                                                                         |
| Form                | Liquid                                                                                                                                                      |
| Concentration       | 1 mg/ml                                                                                                                                                     |
| Purification        | The antibody was affinity-purified from rabbit antiserum by affinity-chromatography using epitope-specific immunogen and the purity is > 95% (by SDS-PAGE). |
| Suggested Dilutions | WB: 1:500-1:1000                                                                                                                                            |

## Anti-PPP3CA Antibody (A03026) Images



Western blot (WB) analysis of PPP3CA polyclonal antibody at 1:500 dilution LaneA:Hela whole cell lysate(40ug)  
LaneB:A549 whole cell lysate(40ug) LaneC:U2OS whole cell lysate(40ug) LaneD:The Brain tissue lysate of Rat(40ug)  
LaneE:The Lung tissue lysate of Mouse(40ug)

## Submit a product review to Biocompare.com

Submit a review of this product to Biocompare.com to receive a \$20 Amazon.com giftcard! Your reviews help your fellow scientists make the right decisions. Thank you for your contribution.



### Anti-PPP3CA Antibody

For Research Use Only. Not for use in diagnostic procedures.