

Anti-PP2B-A alpha PPP3CA Monoclonal Antibody

Catalog Number: A03026-1

About PPP3CA

Anti-Cul2 antibody can be used in western blotting, ELISA and IP. Cullins assemble a potentially large number of ubiquitin ligases by binding to the RING protein ROC1 to catalyse polyubiquitination, as well as binding to various specificity factors to recruit substrates. Cullin 2 is an essential component of the SCF (SKP1-CUL1-F-box protein) E3 ubiquitin ligase complex, which mediates the ubiquitination of proteins involved in cell cycle progression, signal transduction and transcription. In the SCF complex, cul2 serves as a rigid scaffold that organizes the SKP1-F-box protein and RBX1 subunits. Cul2 may also contribute to catalysis through positioning of the substrate and the ubiquitin-conjugating enzyme. Cul2 is part of the SCF complex consisting of CUL1, RBX1, SKP1 and SKP2, where it interacts directly with SKP1, SKP2 and RBX1. Cul2 also interacts with RNF7 and is part of a complex with TIP120A/CAND1 and RBX1. The unneddylated form interacts with TIP120A/CAND1 and the interaction negatively regulates the association with SKP1 in the SCF complex.

Overview

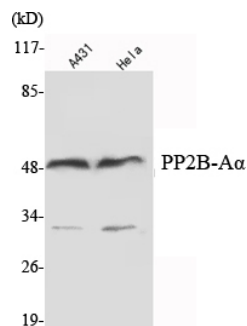
Product Name	Anti-PP2B-A alpha PPP3CA Monoclonal Antibody
Reactive Species	Human, Mouse, Rat
Description	Boster Bio Anti-PP2B-A alpha PPP3CA Monoclonal Antibody catalog # A03026-1. Tested in WB applications. This antibody reacts with Human, Mouse, Rat.
Application	WB
Clonality	Monoclonal
Formulation	Purified mouse monoclonal in buffer containing 0.1M Tris-Glycine (pH 7.4, 150 mM NaCl) with 0.2% sodium azide, 50% glycerol.
Storage Instructions	Store at -20°C for one year. For short term storage and frequent use, store at 4°C for up to one month. Avoid repeated freeze-thaw cycles.
Host	Mouse
Uniprot ID	Q08209

Technical Details

Immunogen	Synthetic peptide from human protein at AA range: 190-236.
Predicted Reactive Species	Bovine, Canine, Equine, Pig, Rabbit
Isotype	IgG
Form	Liquid
Concentration	1 mg/ml

Purification	Protein A purified
Suggested Dilutions	<p>Dilute the sample so that the expected range of concentrations fall within the detection range of this kit.</p> <p>If the expected range of concentration is unknown, a pilot test should be conducted to decide the optimal dilution ratio for your samples.</p> <p>Some PubMed article(s) citing the expression level of this target are as follows:</p> <p>Boster Bio's internal QC testing used:</p> <p>WB, 1:1000-1:2000</p>

Anti-PP2B-A alpha PPP3CA Monoclonal Antibody (A03026-1) Images



Western Blot (WB) analysis using PP2B-Aalpha Monoclonal antibody against A431, HeLa cell lysate .

1 Publications Citing This Product

1. PubMed ID: 25587324, Buckwheat Rutin Inhibits AngII-induced Cardiomyocyte Hypertrophy via Blockade of CaN-dependent Signal Pathway

Visit bosterbio.com/anti-pp2b-a-alpha-antibody-a03026-1-boster.html to see all 1 publications.

Submit a product review to Biocompare.com

Submit a review of this product to Biocompare.com to receive a \$20 Amazon.com giftcard! Your reviews help your fellow scientists make the right decisions. Thank you for your contribution.



Anti-PP2B-A alpha PPP3CA Monoclonal Antibody