

Anti-p62Dok(Ab-398) DOK1 Antibody

Catalog Number: A03039

About DOK1

DOK proteins are enzymatically inert adaptor or scaffolding proteins. They provide a docking platform for the assembly of multimolecular signaling complexes. DOK1 appears to be a negative regulator of the insulin signaling pathway. Modulates integrin activation by competing with talin for the same binding site on ITGB3.

Michael J. Wick, et, al. (2001) J. Biol. Chem; 276: 42843 - 42850.

Paul D. Simoncic, et, al. (2006) Mol. Cell. Biol; 26: 4149 - 4160.

Nadia Dub

Overview

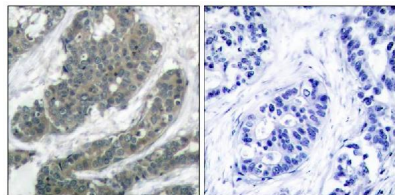
| | |
|----------------------|--|
| Product Name | Anti-p62Dok(Ab-398) DOK1 Antibody |
| Reactive Species | Human |
| Description | Boster Bio Anti-p62Dok(Ab-398) DOK1 Antibody (Catalog # A03039). Tested in WB, IHC, IF applications. This antibody reacts with Human. |
| Application | IF, IHC, WB |
| Clonality | Polyclonal |
| Formulation | Supplied at 1.0mg/mL in phosphate buffered saline (without Mg ²⁺ and Ca ²⁺), pH 7.4, 150mM NaCl, 0.02% sodium azide and 50% glycerol. |
| Storage Instructions | Store at -20°C for one year. For short term storage and frequent use, store at 4°C for up to one month. Avoid repeated freeze-thaw cycles. |
| Host | Rabbit |
| Uniprot ID | Q99704 |

Technical Details

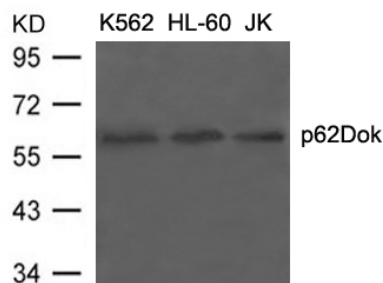
| | |
|----------------------------|---|
| Immunogen | Peptide sequence around aa.396~400 (P-I-Y-D-E) derived from Human p62Dok. |
| Predicted Reactive Species | Boar, Bovine, Canine, Golden Hamster |
| Isotype | IgG |
| Form | Liquid |
| Concentration | 1 mg/ml |
| Purification | Antibodies were produced by immunizing rabbits with synthetic peptide and KLH conjugates. |

| | |
|---------------------|--|
| | Antibodies were purified by affinity-chromatography using epitope-specific peptide. |
| Suggested Dilutions | <p>Dilute the sample so that the expected range of concentrations fall within the detection range of this kit.</p> <p>If the expected range of concentration is unknown, a pilot test should be conducted to decide the optimal dilution ratio for your samples.</p> <p>Some PubMed article(s) citing the expression level of this target are as follows:</p> <p>Boster Bio's internal QC testing used:</p> <p>Predicted MW: 62kd</p> <p>Western blotting: 1:500~1:1000</p> <p>Immunohistochemistry: 1:50~1:100</p> <p>Immunofluorescence: 1:100~1:200</p> |

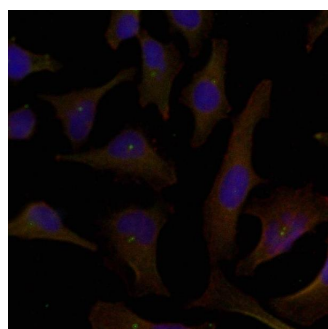
Anti-p62Dok(Ab-398) DOK1 Antibody (A03039) Images



Immunohistochemical analysis of paraffin-embedded human breast carcinoma tissue using p62Dok(Ab-398) antibody A03039(left) or the same antibody preincubated with blocking peptide(right).



Western blot analysis of extracts from K562, HL-60 and JK cells using p62Dok(Ab-398) antibody A03039.



Immunofluorescence staining of methanol-fixed Hela cells using p62Dok(Ab-398) antibody A03039.

Submit a product review to Biocompare.com

Submit a review of this product to Biocompare.com to receive a \$20 Amazon.com giftcard! Your reviews help your fellow scientists make the right decisions. Thank you for your contribution.



Anti-p62Dok(Ab-398) DOK1 Antibody