

Anti-Reg I alpha REG1A Monoclonal Antibody

Catalog Number: A03075

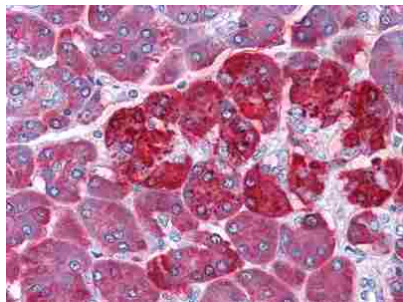
Overview

Product Name	Anti-Reg I alpha REG1A Monoclonal Antibody
Reactive Species	Human
Description	Boster Bio Anti-Reg I alpha REG1A Monoclonal Antibody catalog # A03075. Tested in IF, IHC applications. This antibody reacts with Human.
Application	ELISA, IF, IHC-P
Clonality	Monoclonal 1A4
Formulation	Ascitic fluid containing 0.03% sodium azide, 0.5% BSA, 50% glycerol.
Storage Instructions	Store at -20°C for one year. For short term storage and frequent use, store at 4°C for up to one month. Avoid repeated freeze-thaw cycles.
Host	Mouse
Uniprot ID	P05451

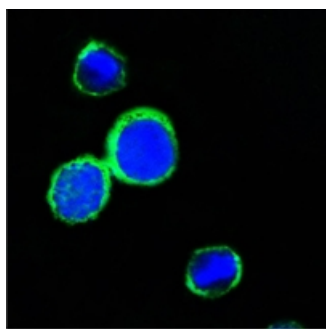
Technical Details

Immunogen	Purified recombinant fragment of human Reg Ialpha fused with hIgGfc tag expressed in HEK293 cell line.
Predicted Reactive Species	Bovine, Canine, Equine, Pig, Rabbit
Isotype	IgG1
Form	Liquid
Concentration	1 mg/mL
Purification	Affinity purification
Suggested Dilutions	<p>Dilute the sample so that the expected range of concentrations fall within the detection range of this kit.</p> <p>If the expected range of concentration is unknown, a pilot test should be conducted to decide the optimal dilution ratio for your samples.</p> <p>Some PubMed article(s) citing the expression level of this target are as follows:</p> <p>Boster Bio's internal QC testing used:</p> <p>IHC 1:200-1:1000</p> <p>IF 1:200-1:1000</p> <p>ELISA 1:10000</p>

Anti-Reg I alpha REG1A Monoclonal Antibody (A03075) Images



Immunohistochemistry (IHC) analysis of paraffin-embedded Human Pancreas tissues with AEC staining using Reg I alpha Monoclonal antibody.



Confocal Immunofluorescence (IF) analysis of PC12 cells using Reg I alpha Monoclonal antibody (green). Blue: DRAQ5 fluorescent DNA dye.

Submit a product review to Biocompare.com

Submit a review of this product to Biocompare.com to receive a \$20 Amazon.com giftcard! Your reviews help your fellow scientists make the right decisions. Thank you for your contribution.



Anti-Reg I alpha REG1A Monoclonal Antibody