

## Anti-Lysine-specific demethylase 5A KDM5A Antibody

Catalog Number: A03079

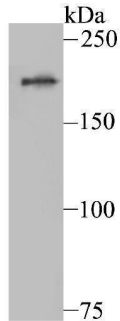
### Overview

Product Name	Anti-Lysine-specific demethylase 5A KDM5A Antibody
Reactive Species	Human
Description	Boster Bio Anti-Lysine-specific demethylase 5A KDM5A Antibody catalog # A03079. Tested in WB,ICC/IF,Flow Cytometry applications. This antibody reacts with Human.
Application	Flow Cytometry, IF, ICC, WB
Clonality	Polyclonal
Formulation	Rabbit IgG, 1mg/ml in PBS with 0.02% sodium azide, 50% glycerol, pH7.2
Storage Instructions	Store at -20°C for one year. For short term storage and frequent use, store at 4°C for up to one month. Avoid repeated freeze-thaw cycles.
Host	Rabbit
Uniprot ID	P29375

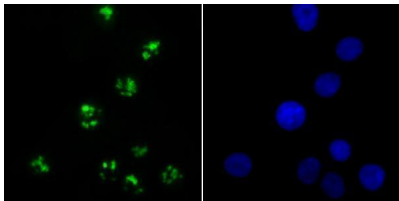
### Technical Details

Immunogen	Recombinant protein
Isotype	IgG
Form	Liquid
Concentration	1 mg/ml
Purification	ProA affinity purified
Suggested Dilutions	WB: 1:500 ICC/IF: 1:50-1:400 FC: 1:50-1:100

## Anti-Lysine-specific demethylase 5A KDM5A Antibody (A03079) Images



Western blot analysis of KDM5A on A549 cell using anti-KDM5A antibody at 1/500 dilution.



ICC staining KDM5A in A549 cells (green). The nuclear counter stain is DAPI (blue). Cells were fixed in paraformaldehyde, permeabilised with 0.25% Triton X100/PBS.

### Submit a product review to [Biocompare.com](https://www.biocompare.com)

Submit a review of this product to [Biocompare.com](https://www.biocompare.com) to receive a \$20 Amazon.com giftcard! Your reviews help your fellow scientists make the right decisions. Thank you for your contribution.



Anti-Lysine-specific demethylase 5A KDM5A Antibody

For Research Use Only. Not for use in diagnostic procedures.