

Anti-ELMO1 Antibody

Catalog Number: A03091-1

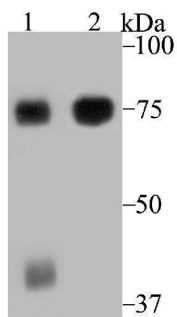
Overview

Product Name	Anti-ELMO1 Antibody
Reactive Species	Human, Mouse, Rat
Description	Boster Bio Anti-ELMO1 Antibody catalog # A03091-1. Tested in WB,IHC,Flow Cytometry,IP applications. This antibody reacts with Human,Mouse,Rat.
Application	Flow Cytometry, IP, IHC, WB
Clonality	Polyclonal
Formulation	Rabbit IgG, 1mg/ml in PBS with 0.02% sodium azide, 50% glycerol, pH7.2
Storage Instructions	Store at -20°C for one year. For short term storage and frequent use, store at 4°C for up to one month. Avoid repeated freeze-thaw cycles.
Host	Rabbit
Uniprot ID	Q92556

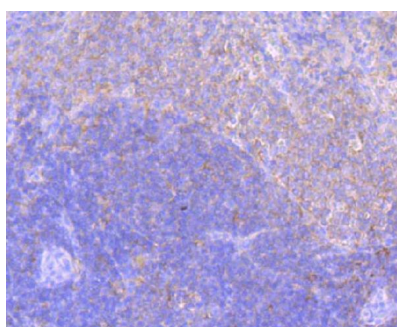
Technical Details

Immunogen	Recombinant protein within human ELMO1 aa 500 to 700.
Isotype	IgG
Form	Liquid
Concentration	1 mg/ml
Purification	ProA affinity purified
Suggested Dilutions	WB: 1:500-1:2,000 IHC: 1:50-1:200 FC: 1:50-1:100 IP: 1:50-1:100

Anti-ELMO1 Antibody (A03091-1) Images



Western blot analysis of ELMO1 on mouse spleen tissue and Jurkat cell lysates using anti-ELMO1 antibody at 1/1,000 dilution.



Immunohistochemical analysis of paraffin-embedded rat spleen tissue using anti-ELMO1 antibody. Counter stained with hematoxylin. The section was pre-treated using heat mediated antigen retrieval with sodium citrate buffer (pH6) for 20 mins.

Submit a product review to [Biocompare.com](https://www.biocompare.com)

Submit a review of this product to [Biocompare.com](https://www.biocompare.com) to receive a \$20 Amazon.com giftcard! Your reviews help your fellow scientists make the right decisions. Thank you for your contribution.



Anti-ELMO1 Antibody

For Research Use Only. Not for use in diagnostic procedures.