

Anti-PDCL Antibody (N-term)

Catalog Number: A03099-1

About PDCL

Isoform 1: Functions as a co-chaperone for CCT in the assembly of heterotrimeric G protein complexes, facilitates the assembly of both Gbeta-Ggamma and RGS-Gbeta5 heterodimers.

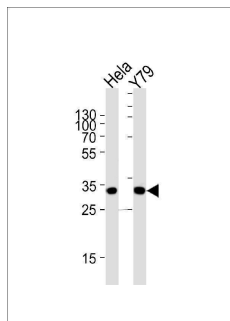
Overview

Product Name	Anti-PDCL Antibody (N-term)
Reactive Species	Human
Description	Boster Bio Anti-PDCL Antibody (N-term) (Catalog # A03099-1). Tested in IHC-P, WB application(s). This antibody reacts with Human.
Application	IHC-P, WB
Clonality	Polyclonal
Formulation	Purified polyclonal antibody supplied in PBS with 0.09% (W/V) sodium azide.
Storage Instructions	Maintain refrigerated at 2-8°C for up to 2 weeks. For long-term storage, store at -20°C in small aliquots to prevent freeze-thaw cycles.
Host	Rabbit
Uniprot ID	Q13371

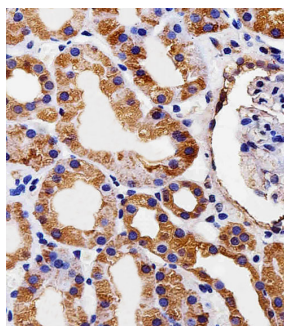
Technical Details

Immunogen	This PDCL antibody is generated from a rabbit immunized with a KLH conjugated synthetic peptide between 1-30 amino acids from the N-terminal region of human PDCL.
Predicted Reactive Species	Bovine, Mouse, Rat
Isotype	Rabbit IgG
Purification	This antibody is purified through a protein A column, followed by peptide affinity purification.
Suggested Dilutions	WB: 1:1000 IHC-P: 1:25

Anti-PDCL Antibody (N-term) (A03099-1) Images



Western blot analysis of lysates from HeLa, Y79 cell line (from left to right), using PDCL Antibody (N-term). A03099-1 was diluted at 1:1000 at each lane. A goat anti-rabbit IgG H&L (HRP) at 1:5000 dilution was used as the secondary antibody. Lysates at 35ug per lane.



Immunohistochemical analysis of paraffin-embedded H.kidney section using PDCL Antibody (N-term). A03099-1 was diluted at 1:25 dilution. A peroxidase-conjugated goat anti-rabbit IgG at 1:400 dilution was used as the secondary antibody, followed by DAB staining.

Submit a product review to [Biocompare.com](https://www.biocompare.com)

Submit a review of this product to [Biocompare.com](https://www.biocompare.com) to receive a \$20 Amazon.com giftcard! Your reviews help your fellow scientists make the right decisions. Thank you for your contribution.



Anti-PDCL Antibody (N-term)

For Research Use Only. Not for use in diagnostic procedures.