

## Anti-Protein HIRA HIRA Antibody

Catalog Number: A03101

### Overview

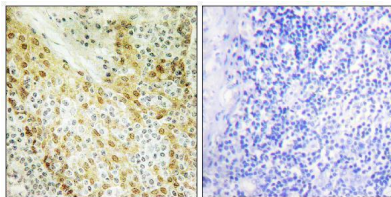
Product Name	Anti-Protein HIRA HIRA Antibody
Reactive Species	Human, Mouse
Description	Boster Bio Anti-Protein HIRA HIRA Antibody catalog # A03101. Tested in ELISA, IHC applications. This antibody reacts with Human, Mouse.
Application	ELISA, IF, IHC
Clonality	Polyclonal
Formulation	Liquid in PBS containing 50% glycerol, 0.5% stabilizing protein and 0.02% sodium azide. *This antibody is supplied in a stabilized formulation. Compatibility with conjugation reactions depends on the chemistry of the conjugation method used. For conjugation methods that are not compatible with the stabilizing components present in this formulation, a carrier-free antibody format is required.
Storage Instructions	Store at -20°C for one year. For short term storage and frequent use, store at 4°C for up to one month. Avoid repeated freeze-thaw cycles.
Host	Rabbit
Uniprot ID	P54198

### Technical Details

Immunogen	The antiserum was produced against synthesized peptide derived from human HIRA. AA range:521-570
Isotype	IgG
Form	Liquid
Concentration	1 mg/ml
Purification	The antibody was affinity-purified from rabbit antiserum by affinity-chromatography using epitope-specific immunogen.
Suggested Dilutions	IHC 1:100-1:300 ELISA 1:10000 IF 1:50-200

## Anti-Protein HIRA HIRA Antibody (A03101) Images

---



Immunohistochemistry analysis of paraffin-embedded human tonsil tissue, using HIRA Antibody. The picture on the right is blocked with the synthesized peptide.

### Submit a product review to [Biocompare.com](https://www.biocompare.com)

---

Submit a review of this product to [Biocompare.com](https://www.biocompare.com) to receive a \$20 Amazon.com giftcard! Your reviews help your fellow scientists make the right decisions. Thank you for your contribution.



Anti-Protein HIRA HIRA Antibody

For Research Use Only. Not for use in diagnostic procedures.