

Anti-Bnip3L Antibody

Catalog Number: A03107

About BNIP3L

Members in the Bcl-2 family are critical regulators of apoptosis by either inhibiting or promoting cell death. Bcl-2 homology 3 (BH3) domain is a potent death domain. BH3 domain containing pro-apoptotic proteins, including Bad, Bax, Bid, Bik, Hrk, Nip3, and Bim, form a growing subclass of the Bcl-2 family. A novel BH3 domain containing protein was recently identified and designated Bnip3L, Bnip3alpha, and Nix (for Nip3-like protein X). Bnip3L/Bnip3alpha/Nix is a homolog of the E1B 19K/Bcl-2 binding and pro-apoptotic protein Bnip3. Overexpression of Bnip3L induces apoptosis. Bnip3L interacts with and overcomes suppresses by Bcl-2 and Bcl-xL. Bnip3L is localized in mitochondria. The messenger RNA of Bnip3L is ubiquitously expressed in human tissues. Bnip3L and Bnip3 form a new subfamily of the pro-apoptotic mitochondrial proteins.

Overview

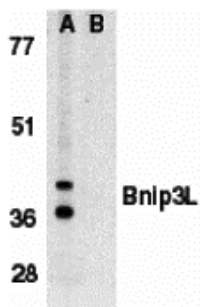
Product Name	Anti-Bnip3L Antibody
Reactive Species	Human
Description	Boster Bio Anti-Bnip3L Antibody (Catalog # A03107). Tested in ELISA, WB, IHC-P, IF applications. This antibody reacts with Human.
Application	ELISA, IF, IHC-P, WB
Clonality	Polyclonal
Formulation	Bnip3L Antibody is supplied in PBS containing 0.02% sodium azide.
Storage Instructions	Bnip3L antibody can be stored at 4°C for three months and -20°C, stable for up to one year. Avoid repeated freeze-thaw cycles. Antibodies should not be exposed to prolonged high temperatures.
Host	Rabbit
Uniprot ID	O60238

Technical Details

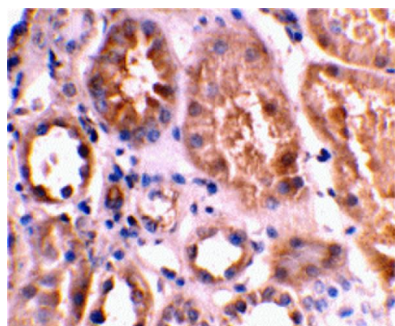
Immunogen	Bnip3L antibody was raised against a 16 amino acid peptide near the center of human Bnip3L. The immunogen is located within amino acids 60 - 110 of Bnip3L.
Predicted Reactive Species	Bovine, Mouse
Cross Reactivity	At least two isoforms of Bnip3L are known to exist.
Isotype	IgG
Form	Liquid
Concentration	1 mg/mL

Purification	Bnip3L Antibody is affinity chromatography purified via peptide column.
Suggested Dilutions	<p>Dilute the sample so that the expected range of concentrations fall within the detection range of this kit.</p> <p>If the expected range of concentration is unknown, a pilot test should be conducted to decide the optimal dilution ratio for your samples.</p> <p>Some PubMed article(s) citing the expression level of this target are as follows:</p> <p>Boster Bio's internal QC testing used:</p> <p>Bnip3L antibody can be used for detection of Bnip3L by Western blot at 1 ug/mL. Antibody can also be used for immunohistochemistry starting at 2 ug/mL. For immunofluorescence start at 10 ug/mL. Antibody validated: Western Blot in human samples; Immunohistochemistry in human samples and Immunofluorescence in human samples. All other applications and species not yet tested. Optimal dilutions for each application should be determined by the researcher.</p>

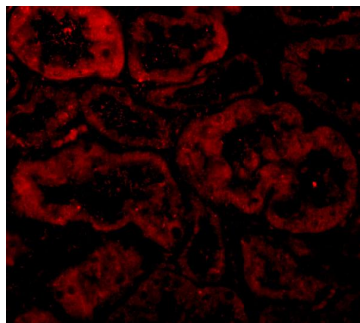
Anti-Bnip3L Antibody (A03107) Images



Western blot analysis of Bnip3L in K562 whole cell lysate in (A) the absence



Immunohistochemical staining of human kidney tissue using Bnip3L antibody at 2 ug/mL.



Immunofluorescence of Bnip3L in Human Kidney tissue with Bnip3L antibody at 10 ug/mL.

Submit a product review to Biocompare.com

Submit a review of this product to Biocompare.com to receive a \$20 Amazon.com giftcard! Your reviews help your fellow scientists make the right decisions. Thank you for your contribution.



Anti-Bnip3L Antibody