

Anti-PRL-3 Antibody

Catalog Number: A03108

About PTP4A3

Protein tyrosine phosphatase which stimulates progression from G1 into S phase during mitosis. Enhances cell proliferation, cell motility and invasive activity, and promotes cancer metastasis. May be involved in the progression of cardiac hypertrophy by inhibiting intracellular calcium mobilization in response to angiotensin II.

Matter W.F. et.al. Biochem. Biophys. Res. Commun. 283:1061-1068(2001)

Wang J.et.al. J. Biol. Chem. 277:46659-46668(2002)

Overview

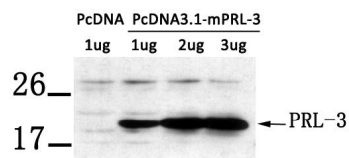
Product Name	Anti-PRL-3 Antibody
Reactive Species	Human, Mouse, Rat
Description	Boster Bio Anti-PRL-3 Antibody (Catalog # A03108). Tested in WB applications. This antibody reacts with Human, Mouse, Rat.
Application	WB
Clonality	Polyclonal
Formulation	Supplied at 1.0mg/mL in phosphate buffered saline (without Mg ²⁺ and Ca ²⁺), pH 7.4, 150mM NaCl, 0.02% sodium azide and 50% glycerol.
Storage Instructions	Store at -20°C for one year. For short term storage and frequent use, store at 4°C for up to one month. Avoid repeated freeze-thaw cycles.
Host	Rabbit
Uniprot ID	O75365

Technical Details

Immunogen	Peptide sequence around aa. 161-166 (K-D-P-H-T) derived from Human PTP4A3.
Predicted Reactive Species	Boar, Bovine, Canine, Golden Hamster
Isotype	IgG
Form	Liquid
Concentration	1 mg/ml
Purification	Antibodies were produced by immunizing rabbits with synthetic peptide and KLH conjugates.

	Antibodies were purified by affinity-chromatography using epitope-specific peptide.
Suggested Dilutions	<p>Dilute the sample so that the expected range of concentrations fall within the detection range of this kit.</p> <p>If the expected range of concentration is unknown, a pilot test should be conducted to decide the optimal dilution ratio for your samples.</p> <p>Some PubMed article(s) citing the expression level of this target are as follows:</p> <p>Boster Bio's internal QC testing used:</p> <p>Predicted MW: 22kd</p> <p>Western blotting: 1:500~1:1000</p>

Anti-PRL-3 Antibody (A03108) Images



Western blot analysis of extract from LX-2 cells transfected with PRL-3 using PRL-3 antibody A03108.

Submit a product review to Biocompare.com

Submit a review of this product to Biocompare.com to receive a \$20 Amazon.com giftcard! Your reviews help your fellow scientists make the right decisions. Thank you for your contribution.



Anti-PRL-3 Antibody