

## Anti-SRSF3 Antibody

Catalog Number: A03127

### About SRSF3

SRSF3, a member of the serine/arginine (SR)-rich family of pre-mRNA splicing factors which constitute part of the spliceosome, may be involved in RNA processing in relation with cellular proliferation and/or maturation (1,2). Each of these factors contains an RNA recognition motif (RRM) for binding RNA and an RS domain for binding other proteins (3). The RS domain is rich in serine and arginine residues and facilitates interaction between different SR splicing factors. In addition to being critical for mRNA splicing, the SR proteins have also been shown to be involved in mRNA export from the nucleus and in translation (3,4).

### Overview

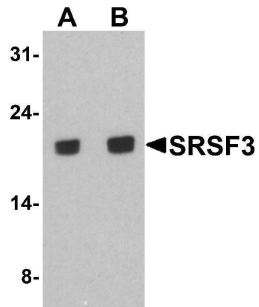
Product Name	Anti-SRSF3 Antibody
Reactive Species	Human, Mouse, Rat
Description	Boster Bio Anti-SRSF3 Antibody (Catalog # A03127). Tested in ELISA, WB, ICC, IF applications. This antibody reacts with Human, Mouse, Rat.
Application	ELISA, IF, ICC, WB
Clonality	Polyclonal
Formulation	SRSF3 antibody is supplied in PBS containing 0.02% sodium azide.
Storage Instructions	SRSF3 antibody can be stored at 4°C for three months and -20°C, stable for up to one year.
Host	Rabbit
Uniprot ID	P84103

### Technical Details

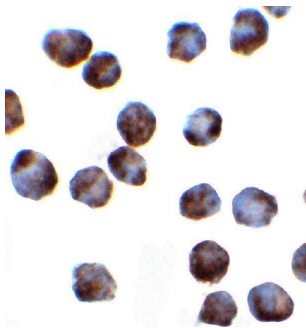
Immunogen	SRSF3 antibody was raised against a 19 amino acid peptide near the center of human SRSF3. The immunogen is located within amino acids 80 - 130 of SRSF3.
Predicted Reactive Species	Bovine
Cross Reactivity	SRSF3 antibody is human, mouse and rat reactive.
Isotype	IgG
Form	Liquid
Concentration	1 mg/mL
Purification	SRSF3 antibody is affinity chromatography purified via peptide column.
Suggested Dilutions	SRSF3 antibody can be used for detection of SRSF3 by Western blot at 1 - 2 ug/ml. Antibody can also

be used for Immunocytochemistry starting at 2 ug/mL. For immunofluorescence start at 2 ug/mL. Antibody validated: Western Blot in human samples; Immunocytochemistry in human samples and Immunofluorescence in human samples. All other applications and species not yet tested. Optimal dilutions for each application should be determined by the researcher.

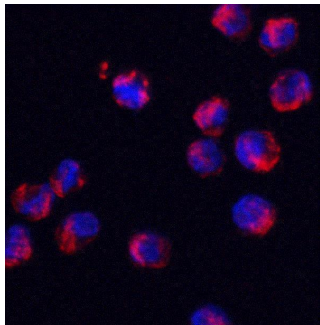
## Anti-SRSF3 Antibody (A03127) Images



Western blot analysis of SRSF3 in K562 cell lysate with SRSF3 antibody at (A) 1 and (B) 2 ug/ml.



Immunocytochemistry of SRSF3 in K562 cells with SRSF3 antibody at 2 ug/mL .



Immunofluorescence of SRSF3 in K562 cells with SRSF3 antibody at 2 ug/mL. Red: SRSF3 Antibody (A03127) Blue: DAPI staining

### Submit a product review to [Biocompare.com](https://www.biocompare.com)

Submit a review of this product to [Biocompare.com](https://www.biocompare.com) to receive a \$20 Amazon.com giftcard! Your reviews help your fellow scientists make the right decisions. Thank you for your contribution.



Anti-SRSF3 Antibody

For Research Use Only. Not for use in diagnostic procedures.