

Anti-ATP2C1 Antibody

Catalog Number: A03143

About ATP2C1

ATP2C1, also known as secretory pathway $\text{Ca}^{2+}/\text{Mn}^{2+}$ -ATPase (SPCA) 1, belongs to the family of P-type cation transport ATPases. This magnesium-dependent enzyme catalyzes the hydrolysis of ATP coupled with the transport of the calcium from the cytosol to the Golgi lumen. Defects in this gene cause Hailey-Hailey disease, an autosomal dominant disorder characterized by persistent blisters and erosions of the skin. Unlike the related protein ATP2C2, ATP2C1 is ubiquitously expressed and displays a lower maximal turnover rate for overall Ca^{2+} -ATPase reaction and a higher apparent affinity for cytosolic Ca^{2+} activation of phosphorylation. Recent evidence suggests that ATP2C1 is a key regulator of insulin-like growth factor receptor (IGF1R) processing in tumor progression in basal breast cancers.

Overview

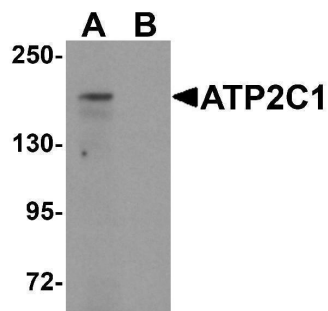
Product Name	Anti-ATP2C1 Antibody
Reactive Species	Human, Mouse
Description	Boster Bio Anti-ATP2C1 Antibody (Catalog # A03143). Tested in ELISA, WB, IHC-P, IF applications. This antibody reacts with Human, Mouse.
Application	ELISA, IF, IHC-P, WB
Clonality	Polyclonal
Formulation	ATP2C1 Antibody is supplied in PBS containing 0.02% sodium azide.
Storage Instructions	ATP2C1 antibody can be stored at 4°C for three months and -20°C, stable for up to one year. Avoid repeated freeze-thaw cycles. Antibodies should not be exposed to prolonged high temperatures.
Host	Rabbit
Uniprot ID	P98194

Technical Details

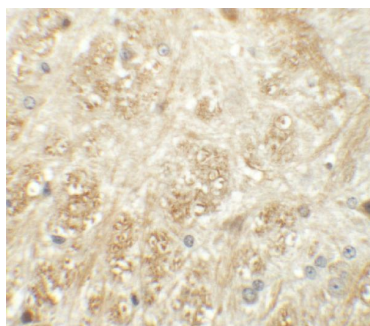
Immunogen	ATP2C1 antibody was raised against a 19 amino acid synthetic peptide near the carboxy terminus of human ATP2C1. The immunogen is located within the last 50 amino acids of ATP2C1.
Predicted Reactive Species	Bovine, Rat
Cross Reactivity	At least four isoforms of ATP2C1 are known to exist; this antibody will recognize only the three longest isoforms. ATP2C1 antibody will not cross-react with ATP2C2.
Isotype	IgG
Form	Liquid
Concentration	1 mg/mL

Purification	ATP2C1 Antibody is affinity chromatography purified via peptide column.
Suggested Dilutions	ATP2C1 antibody can be used for detection of ATP2C1 by Western blot at 1 ug/mL. Antibody can also be used for immunohistochemistry starting at 5 ug/mL. For immunofluorescence start at 20 ug/mL. Antibody validated: Western Blot in mouse samples; Immunohistochemistry in mouse samples and Immunofluorescence in mouse samples. All other applications and species not yet tested. Optimal dilutions for each application should be determined by the researcher.

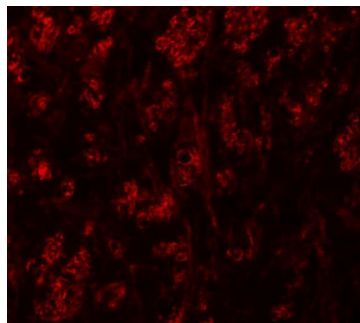
Anti-ATP2C1 Antibody (A03143) Images



Western blot analysis of ATP2C1 in mouse brain tissue lysate with ATP2C1 antibody at 1 ug/mL in (A) the absence and (B) the presence of blocking peptide.



Immunohistochemistry of ATP2C1 in mouse brain tissue with ATP2C1 antibody at 5 ug/mL.



Immunofluorescence of ATP2C1 in mouse brain tissue with ATP2C1 antibody at 20 ug/mL.

Submit a product review to [Biocompare.com](https://www.biocompare.com)

Submit a review of this product to [Biocompare.com](https://www.biocompare.com) to receive a \$20 Amazon.com giftcard! Your reviews help your fellow scientists make the right decisions. Thank you for your contribution.



Anti-ATP2C1 Antibody

For Research Use Only. Not for use in diagnostic procedures.