

Anti-B- and T-lymphocyte attenuator BTLA Antibody

Catalog Number: A03149-1

About BTLA

The B- and T-lymphocyte attenuator (BTLA) protein is a member of the immunoglobulin superfamily containing a single immunoglobulin (Ig) domain (1). Like other co-inhibitory receptors such as CTLA-4 and PD-1, BTLA functions as a receptor that relays inhibitory signals to suppress the immune response, and can inhibit LPS-induced endotoxic shock by suppressing TLR4 signaling in innate immune cells (1,2). Polymorphisms in this gene have also been associated with an increased risk of rheumatoid arthritis (3).

Overview

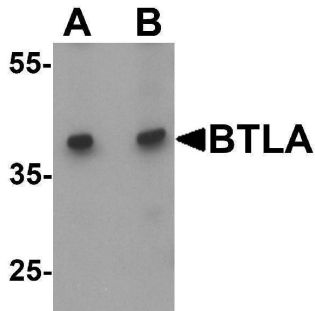
Product Name	Anti-B- and T-lymphocyte attenuator BTLA Antibody
Reactive Species	Human
Description	Boster Bio Anti-B- and T-lymphocyte attenuator BTLA Antibody (Catalog # A03149-1). Tested in ELISA, WB, IHC-P, IF applications. This antibody reacts with Human.
Application	ELISA, IF, IHC-P, WB
Clonality	Polyclonal
Formulation	BTLA Antibody is supplied in PBS containing 0.02% sodium azide.
Storage Instructions	BTLA antibody can be stored at 4°C for three months and -20°C, stable for up to one year.
Host	Rabbit
Uniprot ID	Q7Z6A9

Technical Details

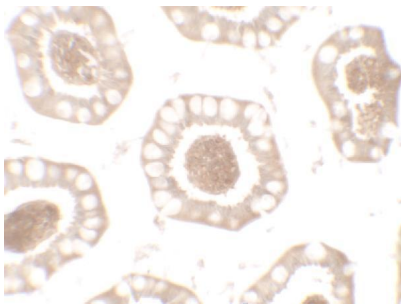
Immunogen	BTLA antibody was raised against a 17 amino acid peptide near the center of human BTLA. The immunogen is located within amino acids 170 - 220 of BTLA.
Predicted Reactive Species	Bovine, Rat
Cross Reactivity	BTLA antibody is human specific. At least two isoforms of BTLA are known to exist.
Isotype	IgG
Form	Liquid
Concentration	1 mg/mL
Purification	BTLA Antibody is affinity chromatography purified via peptide column.
Suggested Dilutions	BTLA antibody can be used for detection of BTLA by Western blot at 1 - 2 ug/ml. Antibody validated: Western Blot in human samples; Immunohistochemistry in human samples and

Immunofluorescence in human samples. All other applications and species not yet tested. Optimal dilutions for each application should be determined by the researcher.

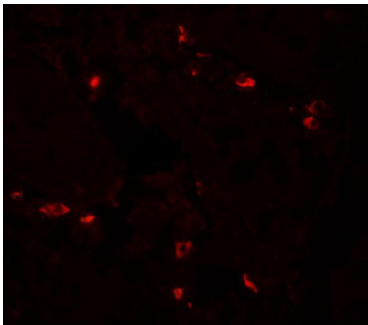
Anti-B- and T-lymphocyte attenuator BTLA Antibody (A03149-1) Images



Western blot analysis of BTLA in Jurkat cell lysate at (A) 1 and (B) 2 ug/ml.



Immunohistochemistry of BTLA in human small intestine tissue with BTLA antibody at 2.5 ug/mL.



Immunofluorescence of BTLA in human small intestine tissue with BTLA antibody at 20 ug/mL.

Submit a product review to [Biocompare.com](https://www.biocompare.com)

Submit a review of this product to [Biocompare.com](https://www.biocompare.com) to receive a \$20 Amazon.com giftcard! Your reviews help your fellow scientists make the right decisions. Thank you for your contribution.



Anti-B- and T-lymphocyte attenuator BTLA Antibody
For Research Use Only. Not for use in diagnostic procedures.