

Anti-GSK3 Alpha / Beta (phospho-Y279/216) GSK3A Antibody

Catalog Number: A03152Y279

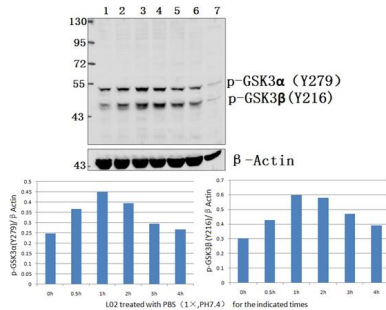
Overview

Product Name	Anti-GSK3 Alpha / Beta (phospho-Y279/216) GSK3A Antibody
Reactive Species	Human, Mouse, Rat
Description	Boster Bio Anti-GSK3 Alpha / Beta (phospho-Y279/216) GSK3A Antibody catalog # A03152Y279. Tested in WB,IHC applications. This antibody reacts with Human,Mouse,Rat.
Application	IHC, WB
Clonality	Polyclonal
Formulation	Rabbit IgG, 1mg/ml in PBS with 0.02% sodium azide, 50% glycerol, pH7.2
Storage Instructions	Store at -20°C for one year. For short term storage and frequent use, store at 4°C for up to one month. Avoid repeated freeze-thaw cycles.
Host	Rabbit
Uniprot ID	P49840/P49841

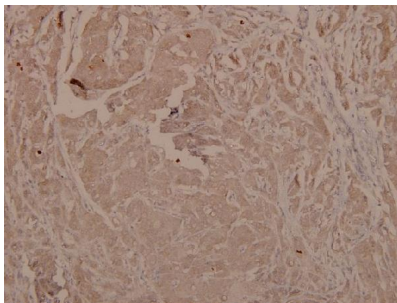
Technical Details

Immunogen	Synthetic phosphopeptide derived from human GSK3alpha around the phosphorylation site of Tyrosine 279.
Isotype	IgG
Form	Liquid
Concentration	1 mg/ml
Purification	The antibody was affinity-purified from rabbit antiserum by affinity-chromatography using epitope-specific immunogen and the purity is > 95% (by SDS-PAGE).
Suggested Dilutions	WB: 1:500-1:2000 IHC: 1:50-1:200

Anti-GSK3 Alpha / Beta (phospho-Y279/216) GSK3A Antibody (A03152Y279) Images



Western blot (WB) analysis of GSK3alpha/beta (phospho-Y279/216) polyclonal antibody at 1:2000 dilution Lane1:L02 whole cell lysate Lane2:L02 treated with PBS(1×PBS,PH7.4) for 30min whole cell lysate Lane3:L02 treated with PBS(1×PBS,PH7.4) for 60min whole cell lysate Lane4:L02 treated with PBS(1×PBS,PH7.4) for 120min whole cell lysate Lane5:L02 treated with PBS(1×PBS,PH7.4) for 180min whole cell lysate Lane6:L02 treated with PBS(1×PBS,PH7.4) for 240min whole cell lysate Lane7:C6 whole cell lysate



Immunohistochemistry (IHC) analyzes of p-GSK3alpha/beta (Y279/216) pAb in paraffin-embedded human breast carcinoma tissue at 1:100.

Submit a product review to Biocompare.com

Submit a review of this product to Biocompare.com to receive a \$20 Amazon.com giftcard! Your reviews help your fellow scientists make the right decisions. Thank you for your contribution.



Anti-GSK3 Alpha / Beta (phospho-Y279/216) GSK3A Antibody

For Research Use Only. Not for use in diagnostic procedures.