

## Anti-Chondroadherin CHAD Antibody

Catalog Number: A03177

### About CHAD

Chondroadherin, also known as CHAD or SLRR4A, belongs to the small leucine-rich proteoglycan (SLRP) family and class IV subfamily and plays a significant role in the regulation of chondrocyte growth and proliferation (1,2). It localizes to the extracellular matrix and contains nine tandem leucine repeats as well as N-terminal and C-terminal leucine rich domains (2-4). Chondroadherin is implicated in the adhesion of fibroblasts, osteoblasts and chondrocytes, which is mediated by interactions with Integrin alpha2 beta1 (2,4,5).

### Overview

Product Name	Anti-Chondroadherin CHAD Antibody
Reactive Species	Human, Mouse, Rat
Description	Boster Bio Anti-Chondroadherin CHAD Antibody (Catalog # A03177). Tested in ELISA, WB, ICC applications. This antibody reacts with Human, Mouse, Rat.
Application	ELISA, ICC, WB
Clonality	Polyclonal
Formulation	Chondroadherin antibody is supplied in PBS containing 0.02% sodium azide.
Storage Instructions	Chondroadherin antibody can be stored at 4°C for three months and -20°C, stable for up to one year.
Host	Rabbit
Uniprot ID	O15335

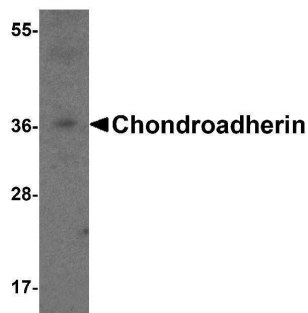
### Technical Details

Immunogen	Chondroadherin antibody was raised against a 17 amino acid peptide near the carboxy terminus of human Chondroadherin. The immunogen is located within the last 50 amino acids of Chondroadherin.
Predicted Reactive Species	Bovine
Cross Reactivity	Chondroadherin antibody is human and mouse reactive. Chondroadherin antibody is predicted to not cross-react with CHADL protein.
Isotype	IgG
Form	Liquid
Concentration	1 mg/mL
Purification	Chondroadherin antibody is affinity chromatography purified via peptide column.

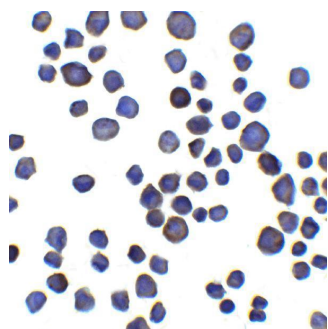
Suggested Dilutions

Chondroadherin antibody can be used for detection of Chondroadherin by Western blot at 1 - 2 ug/ml. Antibody can also be used for immunocytochemistry starting at 5 ug/mL.  
Antibody validated: Western Blot in mouse samples and Immunocytochemistry in mouse samples.  
All other applications and species not yet tested. Optimal dilutions for each application should be determined by the researcher.

## Anti-Chondroadherin CHAD Antibody (A03177) Images



Western blot analysis of Chondroadherin in 3T3 cell lysate with Chondroadherin antibody at 1 ug/ml.



Immunocytochemistry of Chondroadherin in 3T3 cells with Chondroadherin antibody at 5 ug/ml.

### Submit a product review to [Biocompare.com](https://www.biocompare.com)

Submit a review of this product to [Biocompare.com](https://www.biocompare.com) to receive a \$20 Amazon.com giftcard! Your reviews help your fellow scientists make the right decisions. Thank you for your contribution.



Anti-Chondroadherin CHAD Antibody

For Research Use Only. Not for use in diagnostic procedures.