

Anti-GFI1B Antibody (C-term)

Catalog Number: A03180

About GFI1B

Essential proto-oncogenic transcriptional regulator necessary for development and differentiation of erythroid and megakaryocytic lineages. Component of a RCOR-GFI-KDM1A-HDAC complex that suppresses, via histone deacetylase (HDAC) recruitment, a number of genes implicated in multilineage blood cell development and controls hematopoietic differentiation. Transcriptional repressor or activator depending on both promoter and cell type context; represses promoter activity of SOCS1 and SOCS3 and thus, may regulate cytokine signaling pathways. Cooperates with GATA1 to repress target gene transcription, such as the apoptosis regulator BCL2L1; GFI1B silencing in leukemic cell lines markedly increase apoptosis rate. Inhibits down-regulation of MYC and MYB as well as the cyclin-dependent kinase inhibitor CDKN1A/P21WAF1 in IL6-treated myelomonocytic cells. Represses expression of GATA3 in T-cell lymphomas and inhibits GATA1-mediated transcription; as GATA1 also mediates erythroid GFI1B transcription, both GATA1 and GFI1B participate in a feedback regulatory pathway controlling the expression of GFI1B gene in erythroid cells. Suppresses GATA1-mediated stimulation of GFI1B promoter through protein interaction. Binds to gamma-satellite DNA and to its own promoter, auto-repressing its own expression. Alters histone methylation by recruiting histone methyltransferase to target genes promoters. Plays a role in heterochromatin formation.

Overview

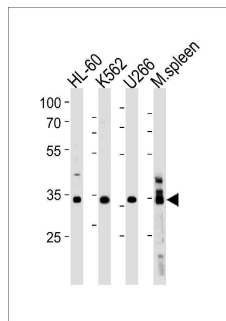
Product Name	Anti-GFI1B Antibody (C-term)
Reactive Species	Human, Mouse
Description	Boster Bio Anti-GFI1B Antibody (C-term) (Catalog # A03180). Tested in WB application(s). This antibody reacts with Human, Mouse.
Application	WB
Clonality	Polyclonal
Formulation	Purified polyclonal antibody supplied in PBS with 0.09% (W/V) sodium azide.
Storage Instructions	Maintain refrigerated at 2-8°C for up to 2 weeks. For long-term storage, store at -20°C in small aliquots to prevent freeze-thaw cycles.
Host	Rabbit
Uniprot ID	Q5VTD9

Technical Details

Immunogen	This GFI1B antibody is generated from rabbits immunized with a KLH conjugated synthetic peptide between 302-330 amino acids from the C-terminal region of human GFI1B.
Predicted Reactive Species	Bovine, Mouse, Rat
Isotype	Rabbit IgG

Purification	This antibody is purified through a protein A column, followed by peptide affinity purification.
Suggested Dilutions	WB: 1:1000

Anti-GFI1B Antibody (C-term) (A03180) Images



GFI1B Antibody (C-term) western blot analysis in HL-60, K562, U266 cell line and mouse spleen lysates (35ug/lane). This demonstrates the GFI1B antibody detected the GFI1B protein (arrow).

Submit a product review to Biocompare.com

Submit a review of this product to Biocompare.com to receive a \$20 Amazon.com giftcard! Your reviews help your fellow scientists make the right decisions. Thank you for your contribution.



Anti-GFI1B Antibody (C-term)

For Research Use Only. Not for use in diagnostic procedures.