

## Anti-E74 like factor 1/ELF1 Antibody Picoband™

Catalog Number: A03187-1

### About ELF1

E74-like factor 1 (ets domain transcription factor) is a protein that in humans is encoded by the ELF1 gene. It is mapped to chromosome 13q13. This gene encodes an E26 transformation-specific related transcription factor. The encoded protein is primarily expressed in lymphoid cells and acts as both an enhancer and a repressor to regulate transcription of various genes. Alternative splicing results in multiple transcript variants.

### Overview

Product Name	Anti-E74 like factor 1/ELF1 Antibody Picoband™
Reactive Species	Human, Mouse, Rat
Description	Boster Bio Anti-E74 like factor 1/ELF1 Antibody Picoband™ catalog # A03187-1. Tested in WB applications. This antibody reacts with Human, Mouse, Rat.
Application	WB
Clonality	Polyclonal
Formulation	Each vial contains 4mg Trehalose, 0.9mg NaCl, 0.2mg Na <sub>2</sub> HPO <sub>4</sub> , 0.05mg NaN <sub>3</sub> .
Storage Instructions	Store at -20°C for one year from date of receipt. After reconstitution, at 4°C for one month. It can also be aliquotted and stored frozen at -20°C for six months. Avoid repeated freeze-thaw cycles.
Host	Rabbit
Uniprot ID	P32519

### Technical Details

Immunogen	A synthetic peptide corresponding to a sequence in the middle region of human E74 like factor 1, which shares 81.6% amino acid (aa) sequence identity with both mouse and rat E74 like factor 1.
Recommended Detection Systems	Boster recommends Enhanced Chemiluminescent Kit with anti-Rabbit IgG (EK1002) for Western blot.
Cross Reactivity	No cross-reactivity with other proteins.
Isotype	Rabbit IgG
Form	Lyophilized
Concentration	Adding 0.2 ml of distilled water will yield a concentration of 500 ug/ml.
Purification	Immunogen affinity purified.
Suggested Dilutions	Dilute the sample so that the expected range of concentrations fall within the detection range of this

kit.

If the expected range of concentration is unknown, a pilot test should be conducted to decide the optimal dilution ratio for your samples.

Some PubMed article(s) citing the expression level of this target are as follows:

Boster Bio's internal QC testing used:

Western blot, 0.1-0.5ug/ml

## Anti-E74 like factor 1/ELF1 Antibody Picoband™ (A03187-1) Images

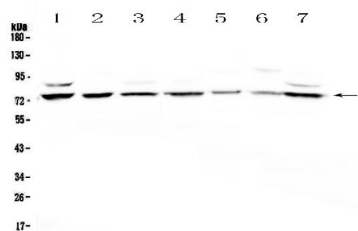


Figure 1. Western blot analysis of E74 like factor 1 using anti-E74 like factor 1 antibody (A03187-1).

Electrophoresis was performed on a 5-20% SDS-PAGE gel at 70V (Stacking gel) / 90V (Resolving gel) for 2-3 hours. The sample well of each lane was loaded with 50ug of sample under reducing conditions.

Lane 1: human Hela whole cell lysates,  
Lane 2: human COLO-320 whole cell lysates,  
Lane 3: human A549 whole cell lysates,  
Lane 4: human PANC-1 whole cell lysates,  
Lane 5: Human A431 whole cell lysates,  
Lane 6: human Jurkat whole cell lysates,  
Lane 7: human 293T whole cell lysates.

After Electrophoresis, proteins were transferred to a Nitrocellulose membrane at 150mA for 50-90 minutes. Blocked the membrane with 5% Non-fat Milk/ TBS for 1.5 hour at RT. The membrane was incubated with rabbit anti-E74 like factor 1 antigen affinity purified polyclonal antibody (Catalog # A03187-1) at 0.5 ug/mL overnight at 4°C, then washed with TBS-0.1%Tween 3 times with 5 minutes each and probed with a goat anti-rabbit IgG-HRP secondary antibody at a dilution of 1:10000 for 1.5 hour at RT. The signal is developed using an Enhanced Chemiluminescent detection (ECL) kit (Catalog # EK1002) with Tanon 5200 system. A specific band was detected for E74 like factor 1 at approximately 75KD. The expected band size for E74 like factor 1 is at 67KD.

## Submit a product review to Biocompare.com

Submit a review of this product to Biocompare.com to receive a \$20 Amazon.com giftcard! Your reviews help your fellow scientists make the right decisions. Thank you for your contribution.



Anti-E74 like factor 1/ELF1 Antibody™