

Anti-Glutamine synthetase GLUL Antibody

Catalog Number: A03191-2

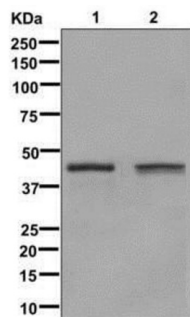
Overview

Product Name	Anti-Glutamine synthetase GLUL Antibody
Reactive Species	Human, Mouse, Rat
Description	Boster Bio Anti-Glutamine synthetase GLUL Antibody catalog # A03191-2. Tested in WB,IHC,IP,Flow Cytometry applications. This antibody reacts with Human,Mouse,Rat.
Application	Flow Cytometry, IP, IHC, WB
Clonality	Polyclonal
Formulation	Rabbit IgG, 1mg/ml in PBS with 0.02% sodium azide, 50% glycerol, pH7.2
Storage Instructions	Store at -20°C for one year. For short term storage and frequent use, store at 4°C for up to one month. Avoid repeated freeze-thaw cycles.
Host	Rabbit
Uniprot ID	P15104

Technical Details

Immunogen	A synthesized peptide derived from human Glutamine Synthetase.
Isotype	IgG
Form	Liquid
Concentration	1 mg/ml
Purification	The antibody was affinity-purified from rabbit antiserum by affinity-chromatography using epitope-specific immunogen and the purity is > 95% (by SDS-PAGE).
Suggested Dilutions	WB: 1:500-1:2000 IHC: 1:50-1:200 IP/FC: 1:50

Anti-Glutamine synthetase GLUL Antibody (A03191-2) Images



Western blot analysis of Glutamine Synthetase expression in (1)Jurkat cell lysate;(2) HeLa cell lysate.

Submit a product review to Biocompare.com

Submit a review of this product to Biocompare.com to receive a \$20 Amazon.com giftcard! Your reviews help your fellow scientists make the right decisions. Thank you for your contribution.



Anti-Glutamine synthetase GLUL Antibody

For Research Use Only. Not for use in diagnostic procedures.