

## Anti-LILRB1 Antibody Picoband®

Catalog Number: A03208-1

### About LILRB1

Leukocyte immunoglobulin-like receptor subfamily B member 1 is a protein that in humans is encoded by the LILRB1 gene. This gene is a member of the leukocyte immunoglobulin-like receptor (LIR) family, which is found in a gene cluster at chromosomal region 19q13.4. The encoded protein belongs to the subfamily B class of LIR receptors which contain two or four extracellular immunoglobulin domains, a transmembrane domain, and two to four cytoplasmic immunoreceptor tyrosine-based inhibitory motifs (ITIMs). The receptor is expressed on immune cells where it binds to MHC class I molecules on antigen-presenting cells and transduces a negative signal that inhibits stimulation of an immune response. It is thought to control inflammatory responses and cytotoxicity to help focus the immune response and limit autoreactivity. Multiple transcript variants encoding different isoforms have been found for this gene.

### Overview

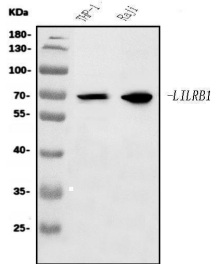
|                      |   |
|----------------------|---|
| Product Name         | Anti-LILRB1 Antibody Picoband®  |
| Reactive Species     | Human   |
| Description          | Boster Bio Anti-LILRB1 Antibody Picoband® catalog # A03208-1. Tested in ELISA, Flow Cytometry, IHC, WB applications. This antibody reacts with Human. The brand Picoband indicates this is a premium antibody that guarantees superior quality, high affinity, and strong signals with minimal background in Western blot applications. Only our best-performing antibodies are designated as Picoband, ensuring unmatched performance. |
| Application          | ELISA, Flow Cytometry, IHC, WB  |
| Clonality            | Polyclonal  |
| Formulation          | Each vial contains 4mg Trehalose, 0.9mg NaCl, 0.2mg Na2HPO4.  |
| Storage Instructions | Store at -20°C for one year from date of receipt. After reconstitution, at 4°C for one month. It can also be aliquotted and stored frozen at -20°C for six months. Avoid repeated freeze-thaw cycles.   |
| Host                 | Rabbit  |
| Uniprot ID           | Q8NHL6  |

### Technical Details

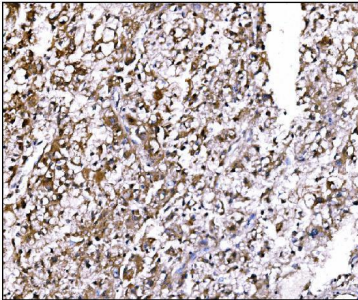
|                               |  |
|-------------------------------|--|
| Immunogen                     | E.coli-derived human LILRB1 recombinant protein (Position: Q347-Q442).   |
| Recommended Detection Systems | Boster recommends Enhanced Chemiluminescent Kit with anti-Rabbit IgG (EK1002) for Western blot, and HRP Conjugated anti-Rabbit IgG Super Vision Assay Kit (SV0002-1) for IHC(P). |
| Cross Reactivity              | No cross-reactivity with other proteins.   |
| Isotype                       | Rabbit IgG   |

|                     |   |
|---------------------|---|
| Form                | Lyophilized   |
| Concentration       | Adding 0.2 ml of distilled water will yield a concentration of 500 ug/ml.   |
| Purification        | Immunogen affinity purified.  |
| Suggested Dilutions | Western blot, 0.25-0.5ug/ml, Human<br>Immunohistochemistry (Paraffin-embedded Section), 2-5ug/ml, Human<br>Flow Cytometry (Fixed), 1-3ug/1x10 <sup>6</sup> cells, Human<br>ELISA, 0.1-0.5ug/ml, - |

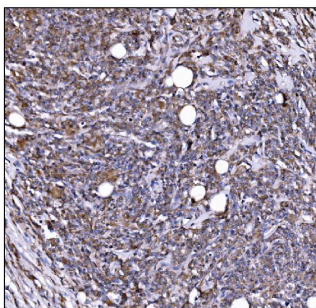
## Anti-LILRB1 Antibody Picoband® (A03208-1) Images



Western blot analysis of LILRB1 using anti-LILRB1 antibody (A03208-1). Electrophoresis was performed on a 5-20% SDS-PAGE gel at 70V (Stacking gel) / 90V (Resolving gel) for 2-3 hours. The sample well of each lane was loaded with 30 ug of sample under reducing conditions. Lane 1: human THP-1 whole cell lysates, Lane 2: human Raji whole cell lysates. After electrophoresis, proteins were transferred to a nitrocellulose membrane at 150 mA for 50-90 minutes. Blocked the membrane with 5% non-fat milk/TBS for 1.5 hour at RT. The membrane was incubated with rabbit anti-LILRB1 antigen affinity purified polyclonal antibody (Catalog # A03208-1) at 0.5 ug/mL overnight at 4°C, then washed with TBS-0.1%Tween 3 times with 5 minutes each and probed with a goat anti-rabbit IgG-HRP secondary antibody at a dilution of 1:5000 for 1.5 hour at RT. The signal is developed using an Enhanced Chemiluminescent detection (ECL) kit (Catalog # EK1002) with Tanon 5200 system. A specific band was detected for LILRB1 at approximately 71 kDa. The expected band size for LILRB1 is at 71 kDa.

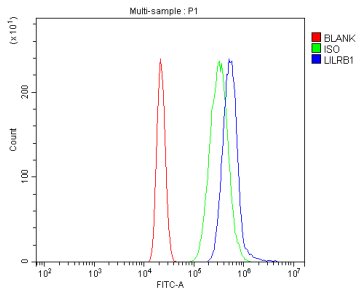


IHC analysis of LILRB1 using anti-LILRB1 antibody (A03208-1). LILRB1 was detected in a paraffin-embedded section of human liver cancer tissue. Heat mediated antigen retrieval was performed in EDTA buffer (pH 8.0, epitope retrieval solution). The tissue section was blocked with 10% goat serum. The tissue section was then incubated with 2 ug/ml rabbit anti-LILRB1 Antibody (A03208-1) overnight at 4°C. Biotinylated goat anti-rabbit IgG was used as secondary antibody and incubated for 30 minutes at 37°C. The tissue section was developed using Streptavidin-Biotin-Complex (SABC) (Catalog # SA1022) with DAB as the chromogen.



IHC analysis of LILRB1 using anti-LILRB1 antibody (A03208-1). LILRB1 was detected in a paraffin-embedded section of human lymphoma tissue. Heat mediated antigen retrieval was performed in EDTA buffer (pH 8.0, epitope retrieval solution). The tissue section was blocked with 10% goat serum. The tissue section was then incubated with 2 ug/ml rabbit anti-LILRB1 Antibody (A03208-1) overnight at 4°C. Biotinylated goat anti-rabbit IgG was used as secondary antibody and incubated for 30 minutes at 37°C. The tissue section was developed using Streptavidin-Biotin-Complex (SABC) (Catalog # SA1022) with DAB as the chromogen.

Flow Cytometry analysis of HL-60 cells using anti-LILRB1 antibody (A03208-1). Overlay histogram showing HL-60 cells stained with A03208-1 (Blue line). The cells were fixed with 4% paraformaldehyde and blocked with 10% normal goat serum. And then incubated with rabbit anti-LILRB1 Antibody (A03208-1, 1 ug/1x10<sup>6</sup> cells) for 30 min at 20°C. DyLight®488 conjugated goat anti-rabbit IgG (BA1127, 5-10 ug/1x10<sup>6</sup> cells) was used as secondary antibody for 30



minutes at 20°C. Isotype control antibody (Green line) was rabbit IgG (1 ug/1x10<sup>6</sup>) used under the same conditions. Unlabelled sample without incubation with primary antibody and secondary antibody (Red line) was used as a blank control.

## 1 Publications Citing This Product

1. PubMed ID: 10.3892/mmr\_00000272, Expression change of PirB in mice retina after optic nerve injury

Visit [bosterbio.com/anti-lilrb1-picoband-trade-antibody-a03208-1-boster.html](http://bosterbio.com/anti-lilrb1-picoband-trade-antibody-a03208-1-boster.html) to see all 1 publications.

## Submit a product review to Biocompare.com

Submit a review of this product to Biocompare.com to receive a \$20 Amazon.com giftcard! Your reviews help your fellow scientists make the right decisions. Thank you for your contribution.



Anti-LILRB1 Antibody

For Research Use Only. Not for use in diagnostic procedures.