

Anti-Cdh1/FZR1 antibody

Catalog Number: A03219-2

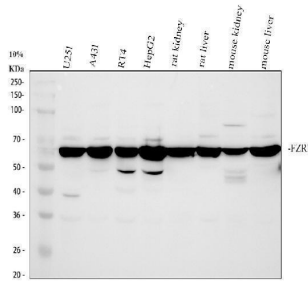
Overview

Product Name	Anti-Cdh1/FZR1 antibody
Reactive Species	Human, Mouse, Rat
Description	Boster Bio Anti-Cdh1/FZR1 antibody catalog # A03219-2. Tested in WB, IHC, ICC, IF, IP, Flow Cytometry applications. This antibody reacts with Human, Mouse, Rat.
Application	Flow Cytometry, IP, IF, IHC, ICC, WB
Clonality	Polyclonal
Formulation	500 ug/ml antibody with PBS, 0.02% NaN ₃ , 1 mg stabilizing protein and 50% glycerol *This antibody is supplied in a stabilized formulation. Compatibility with conjugation reactions depends on the chemistry of the conjugation method used. For conjugation methods that are not compatible with the stabilizing components present in this formulation, a carrier-free antibody format is required.
Storage Instructions	12 months from date of receipt at -20°C as supplied. 6 months at 2 to 8°C after reconstitution. Avoid repeated freezing and thawing.
Host	Rabbit
Uniprot ID	Q9UM11

Technical Details

Immunogen	E.coli-derived human FZR1 recombinant protein (Position: T220-R496)
Form	Liquid
Concentration	500 ug/ml
Purification	Immunogen affinity purified.
Suggested Dilutions	Western blot, 1:500-2000 Immunohistochemistry, 1:50-400 Immunocytochemistry/Immunofluorescence, 1:50-400 Immunoprecipitation, 1:50 Flow Cytometry (Fixed), 1-3ug/1x10 ⁶ cells

Anti-Cdh1/FZR1 antibody (A03219-2) Images



Western blot analysis of FZR1 using anti-FZR1 antibody (A03219-2). Electrophoresis was performed on a 10% SDS-PAGE gel at 80V (Stacking gel) / 120V (Resolving gel) for 2 hours. The sample well of each lane was loaded with 30 ug of sample under reducing conditions. Lane 1: human U251 whole cell lysates, Lane 2: human A431 whole cell lysates, Lane 3: human RT4 whole cell lysates, Lane 4: human HepG2 whole cell lysates, Lane 5: rat kidney tissue lysates, Lane 6: rat liver tissue lysates, Lane 7: mouse kidney tissue lysates, Lane 8: mouse liver tissue lysates. After electrophoresis, proteins were transferred to a nitrocellulose membrane at 150 mA for 50-90 minutes. Blocked the membrane with 5% non-fat milk/TBS for 1.5 hour at RT. The membrane was incubated with rabbit anti-FZR1 antigen affinity purified polyclonal antibody (A03219-2) at 1:1000 overnight at 4°C, then washed with TBS-0.1%Tween 3 times with 5 minutes each and probed with a goat anti-rabbit IgG-HRP secondary antibody at a dilution of 1:5000 for 1.5 hour at RT. The signal is developed using an ECL Plus Western Blotting Substrate (Catalog # AR1196-200) with Tanon 5200 system. A specific band was detected for FZR1 at approximately 60 kDa. The expected band size for FZR1 is at 55 kDa.

Submit a product review to [Biocompare.com](https://www.biocompare.com)

Submit a review of this product to [Biocompare.com](https://www.biocompare.com) to receive a \$20 Amazon.com giftcard! Your reviews help your fellow scientists make the right decisions. Thank you for your contribution.



Anti-Cdh1/FZR1 antibody

For Research Use Only. Not for use in diagnostic procedures.